
















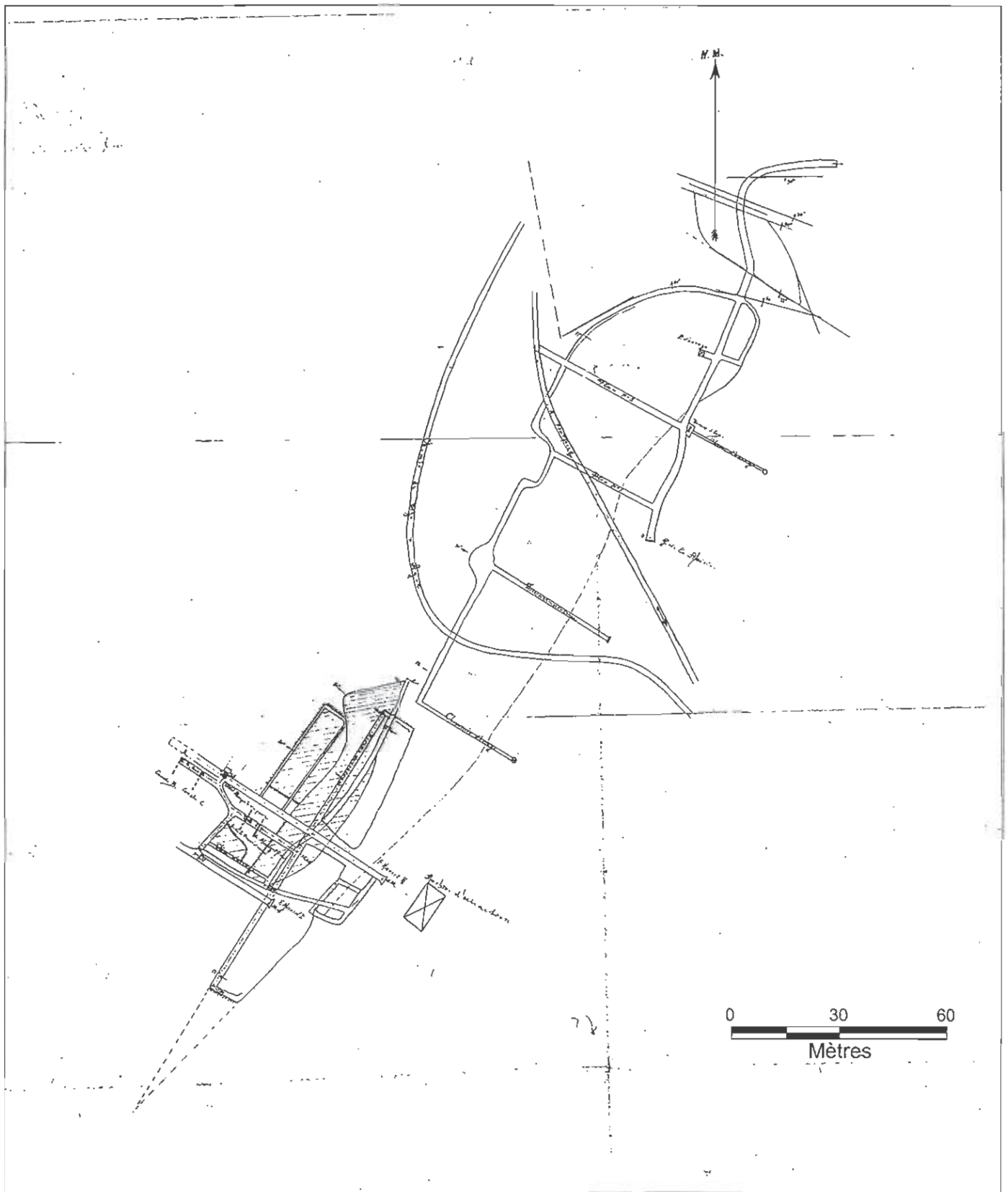


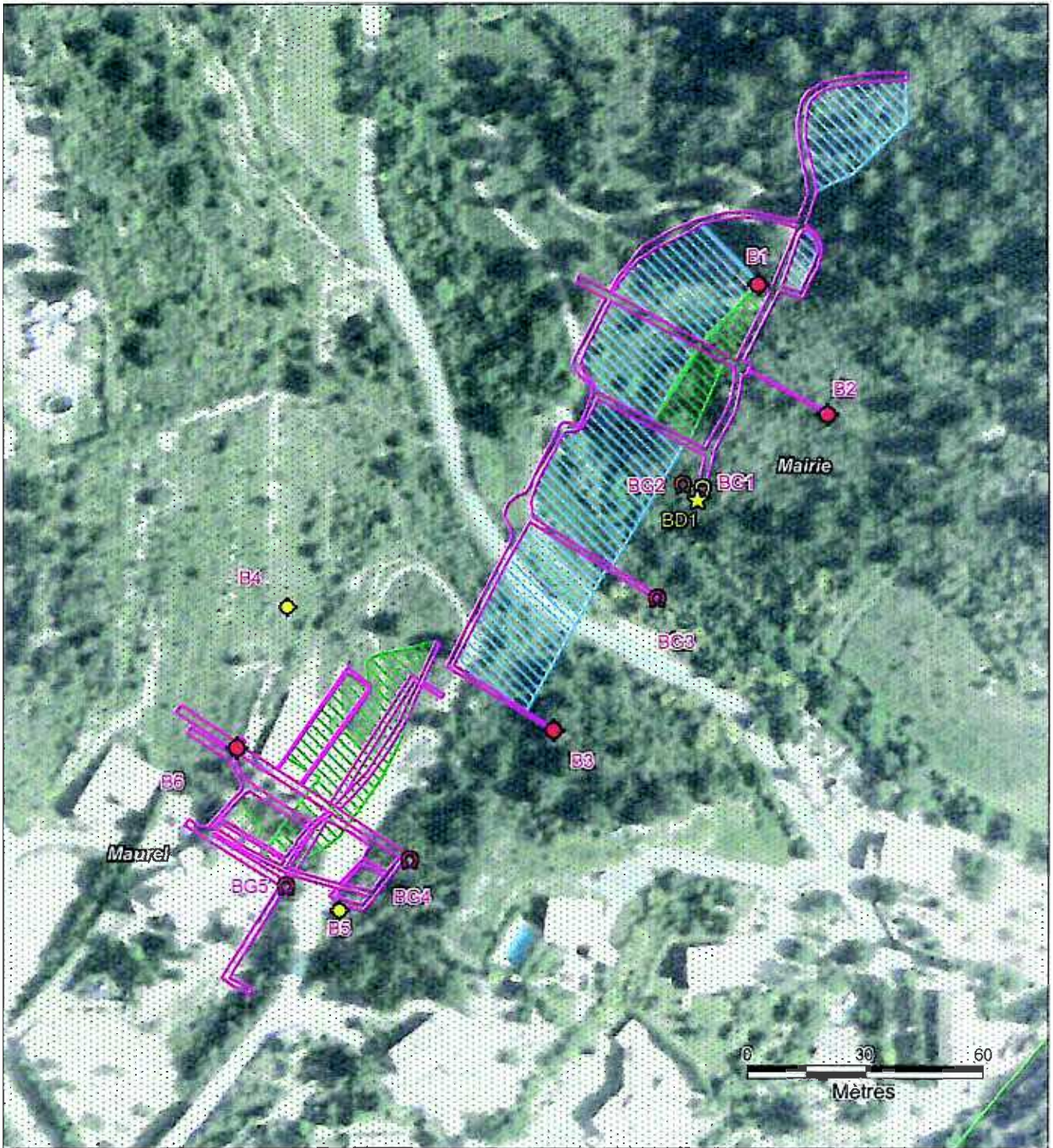
ANNEXE 3 :
PRINCIPAUX PLANS RETROUVES DANS LES
ARCHIVES ET ZOOMS SUR LES SITES EXPLOITES

Légende :

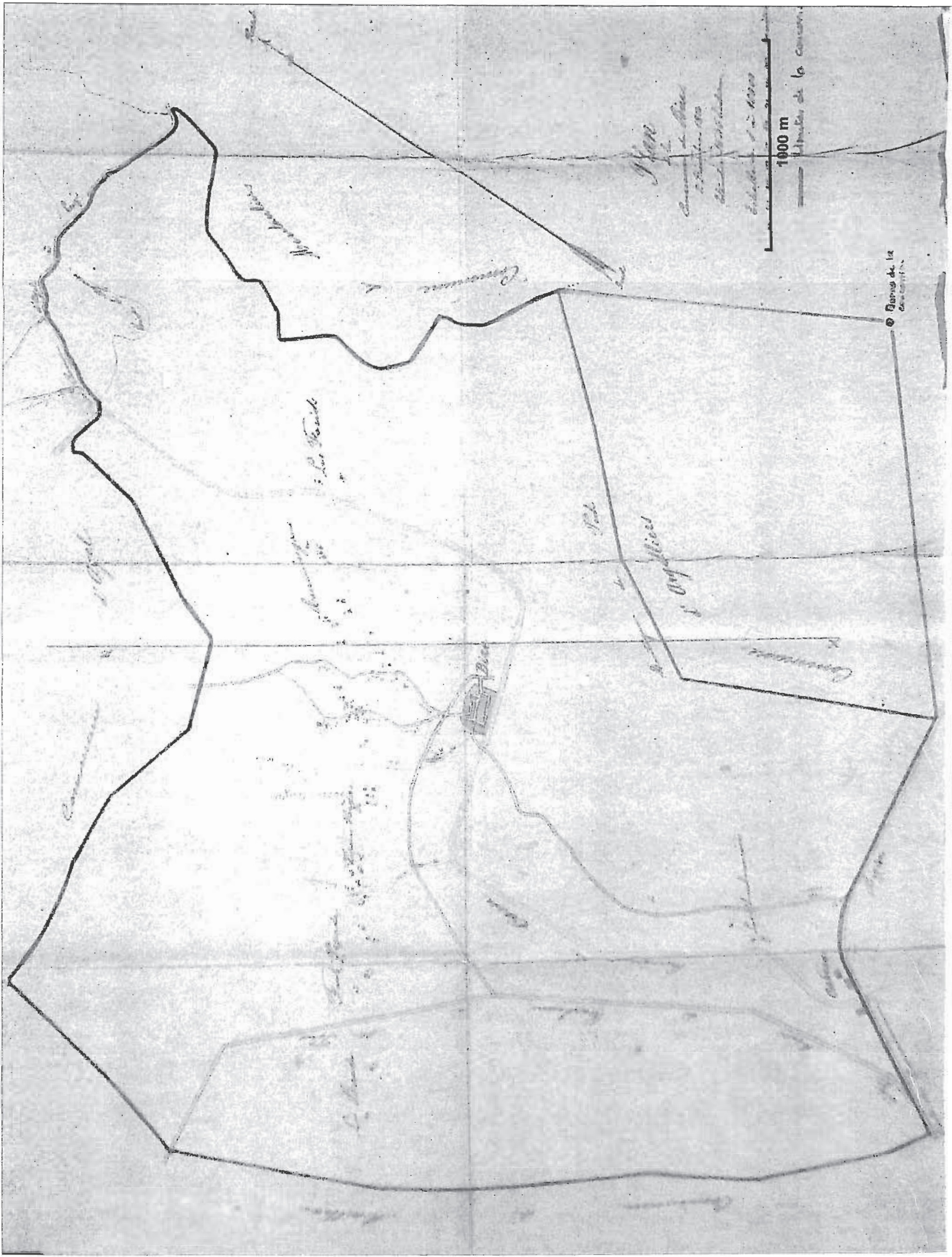
	Limite de commune		Puits retrouvé et remblayé
	Limite de concession et de permis d'exploitation		Puits identifié sur plan et non retrouvé
	Affleurements de lignite		Puits retrouvé et ouvert
	Terrils		Entrée de galerie identifiée sur plan et non retrouvée
	Vestiges miniers		Entrée de galerie retrouvée et remblayée ou effondrée
	Galeries connues		Entrée de galerie retrouvée et ouverte
	Désordre		Zone de travaux connus
	Point de prélèvement d'eau		Zone de travaux potentiels
			Zone de grattage



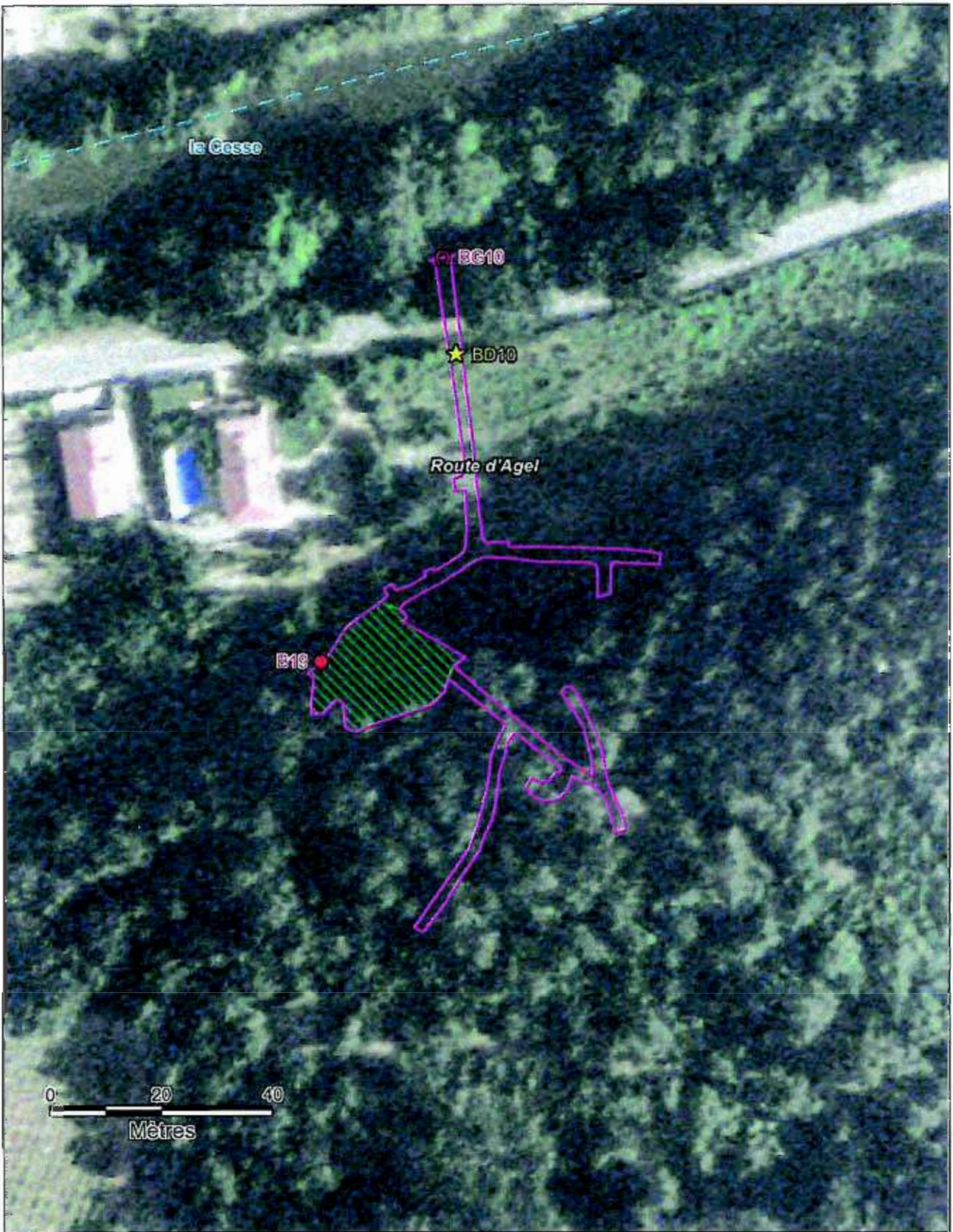
Plan 1a: Travaux des sites de Mairie et Maurel [2]



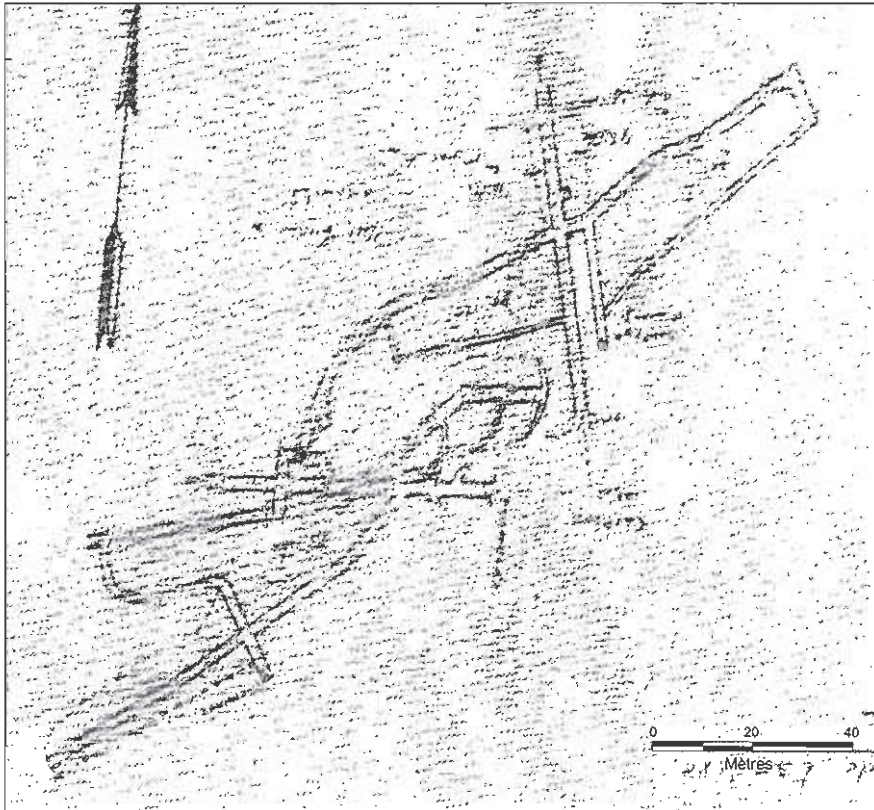
Plan 1b: Agrandissement des travaux des sites de Mairie et Maurel



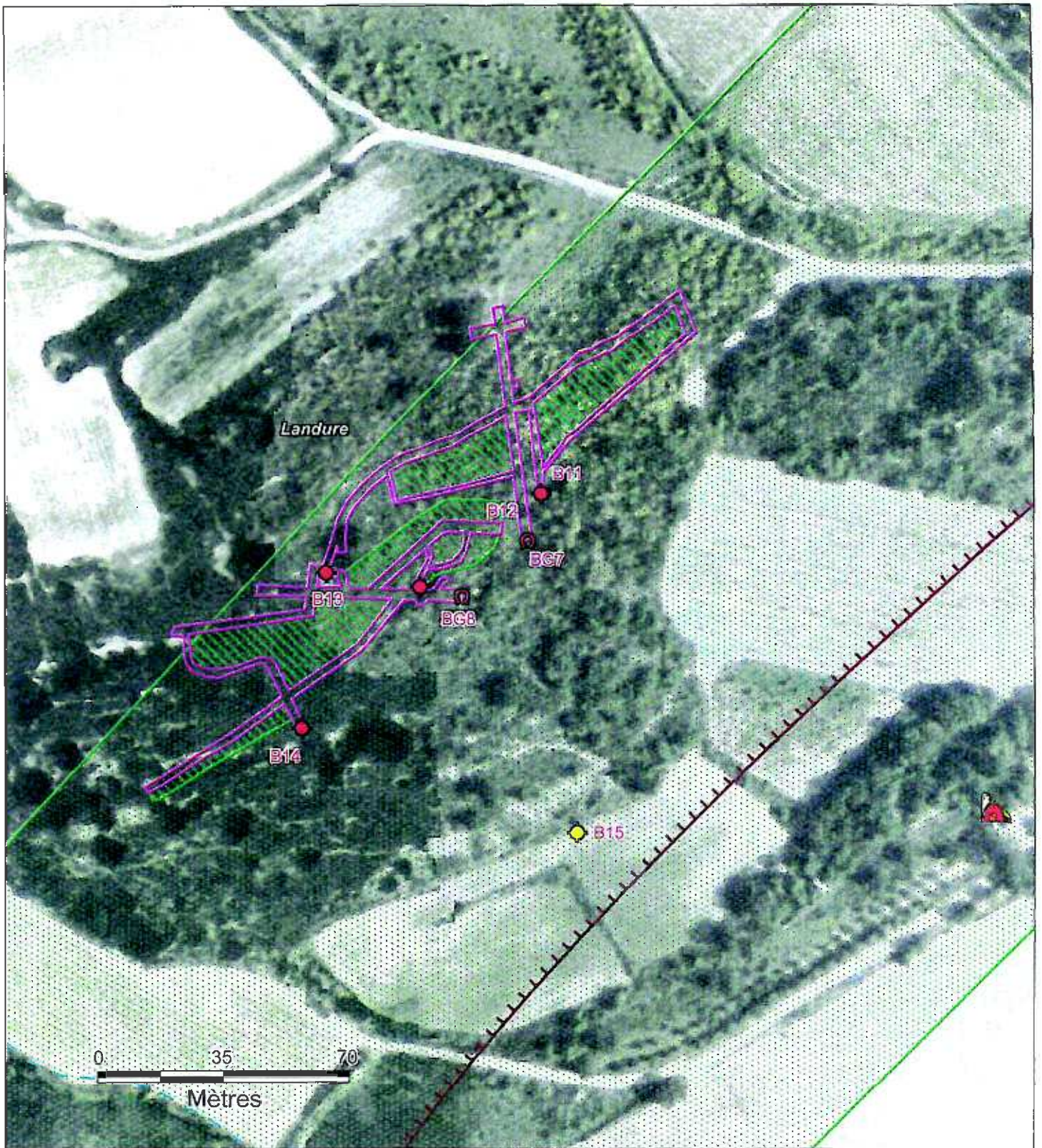
Plan 2: Grattages au Nord de Bize [1]



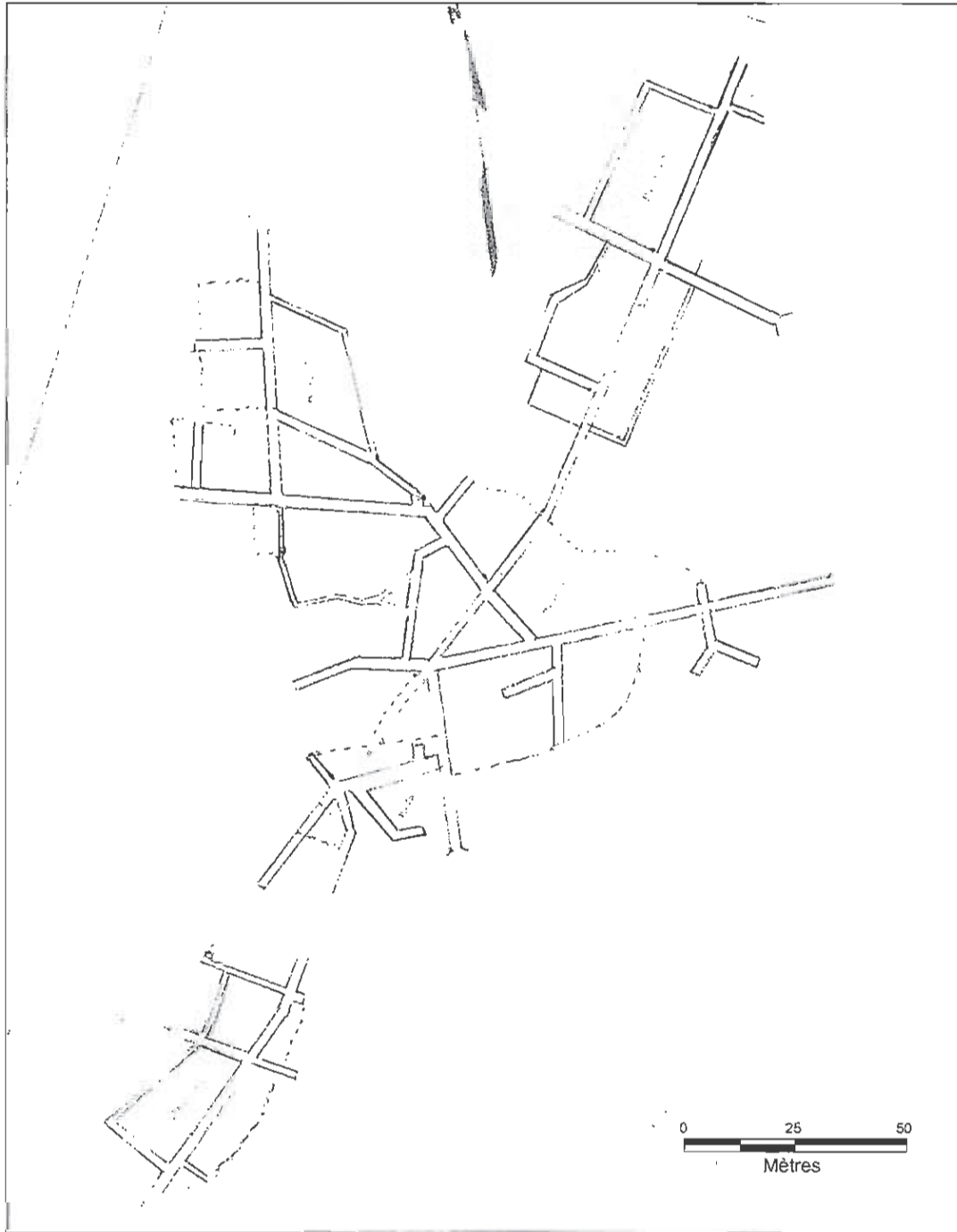
Plan 3b: Agrandissement des travaux du site de la route d'Agel



Plan 4a: Travaux du site de Landure [10]



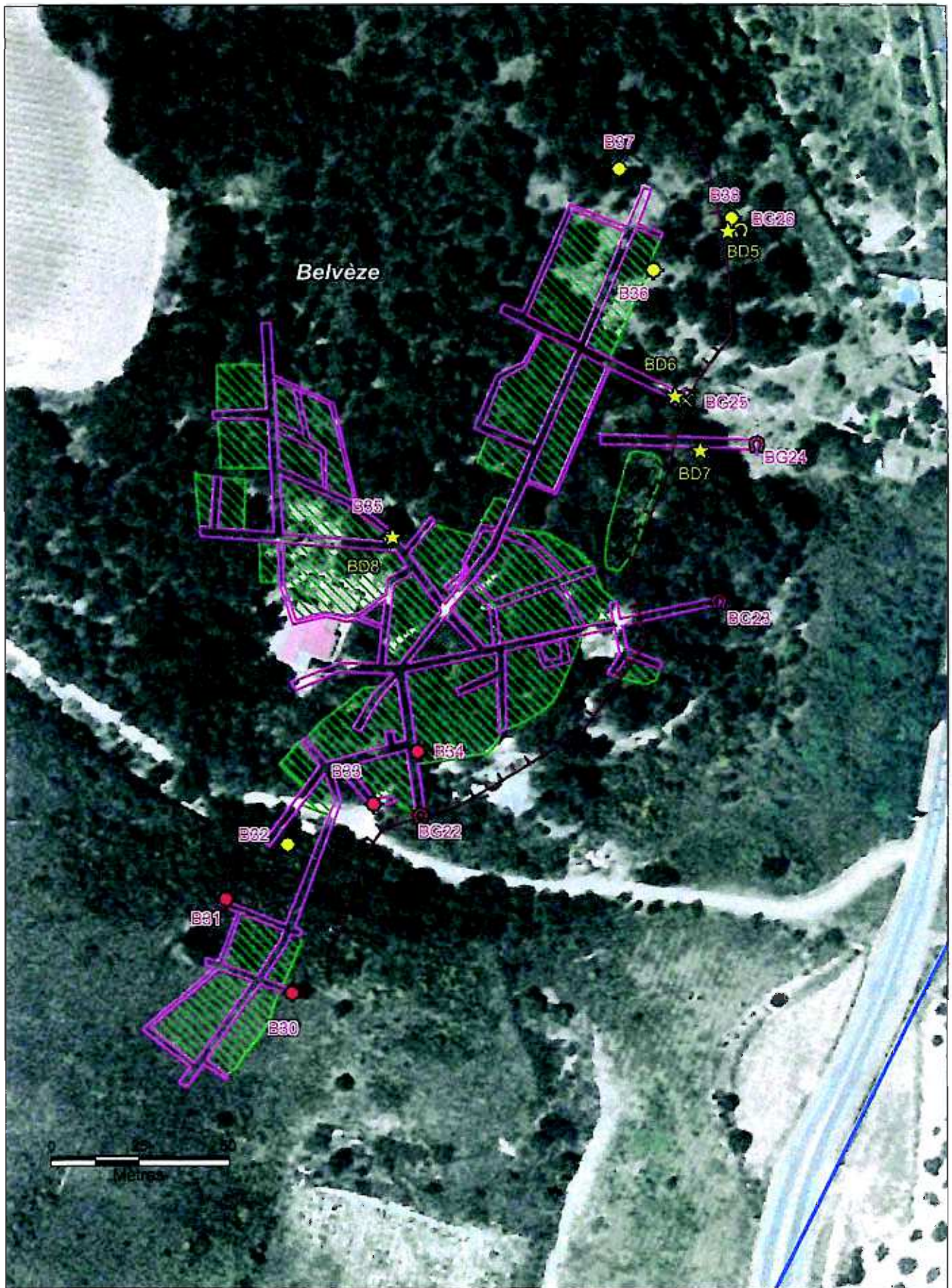
Plan 4b: Agrandissement des travaux du site de Landure



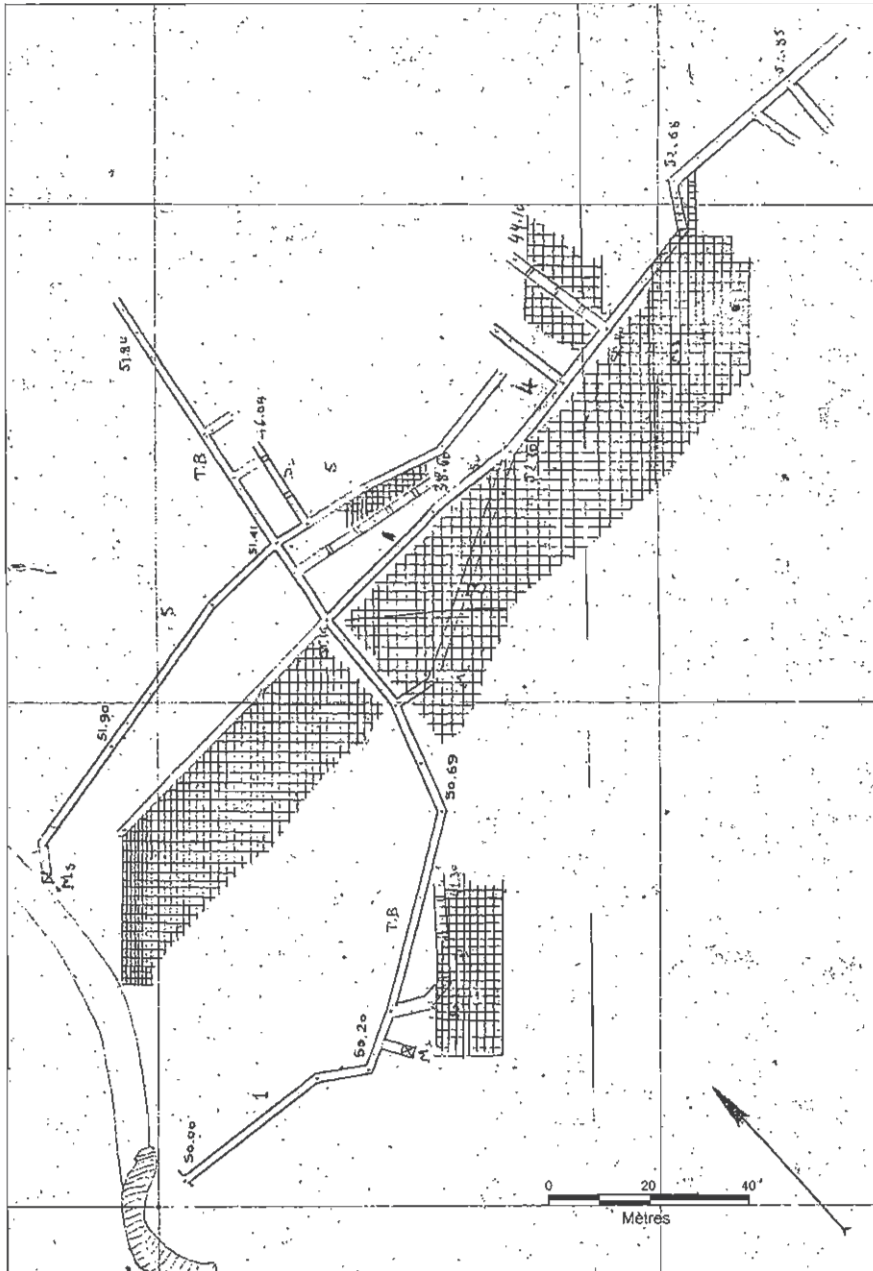
Plan 5a: Travaux du site de Belvèze [9]



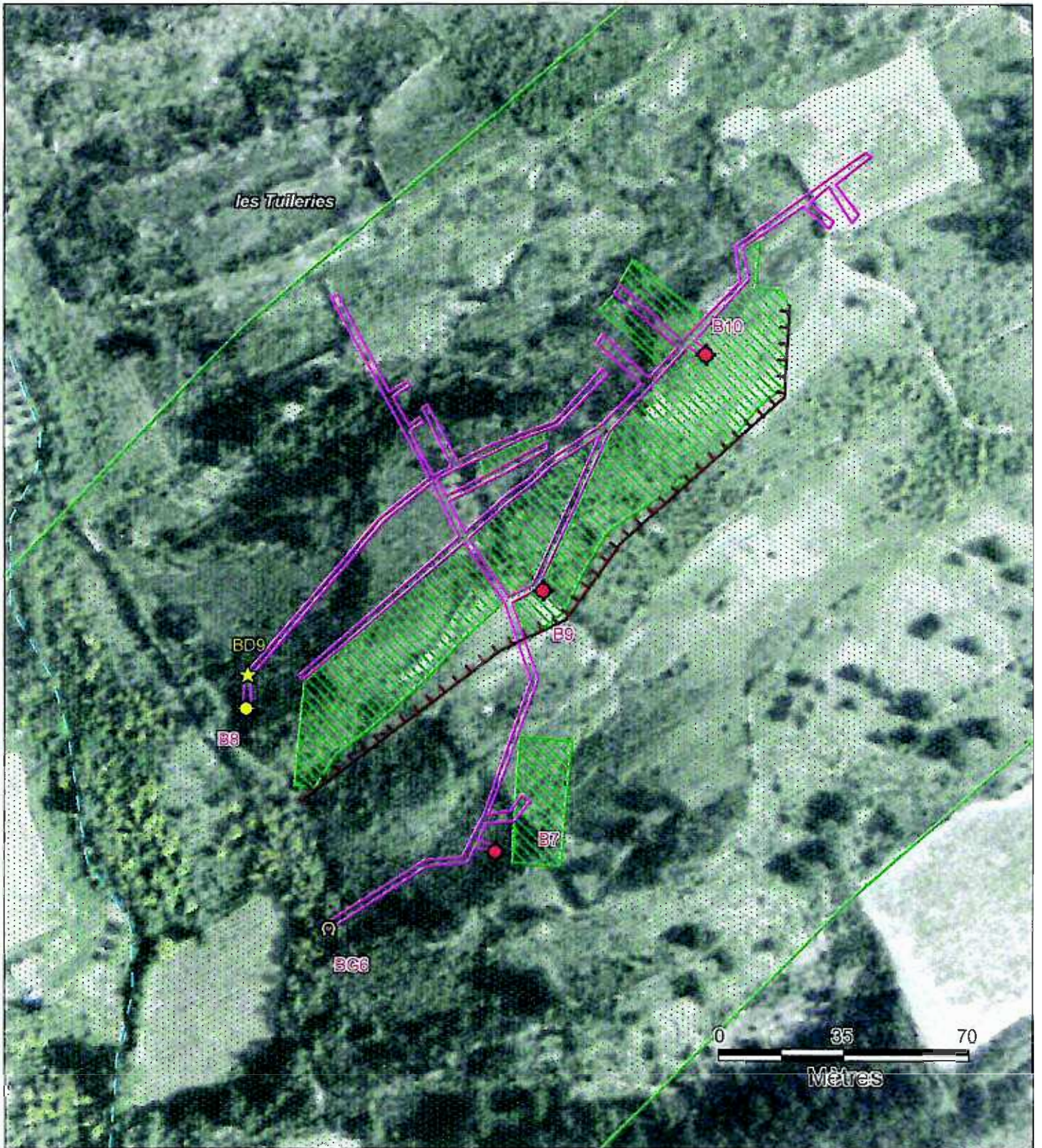
Plan 5b: Travaux du site de Belvèze [8]



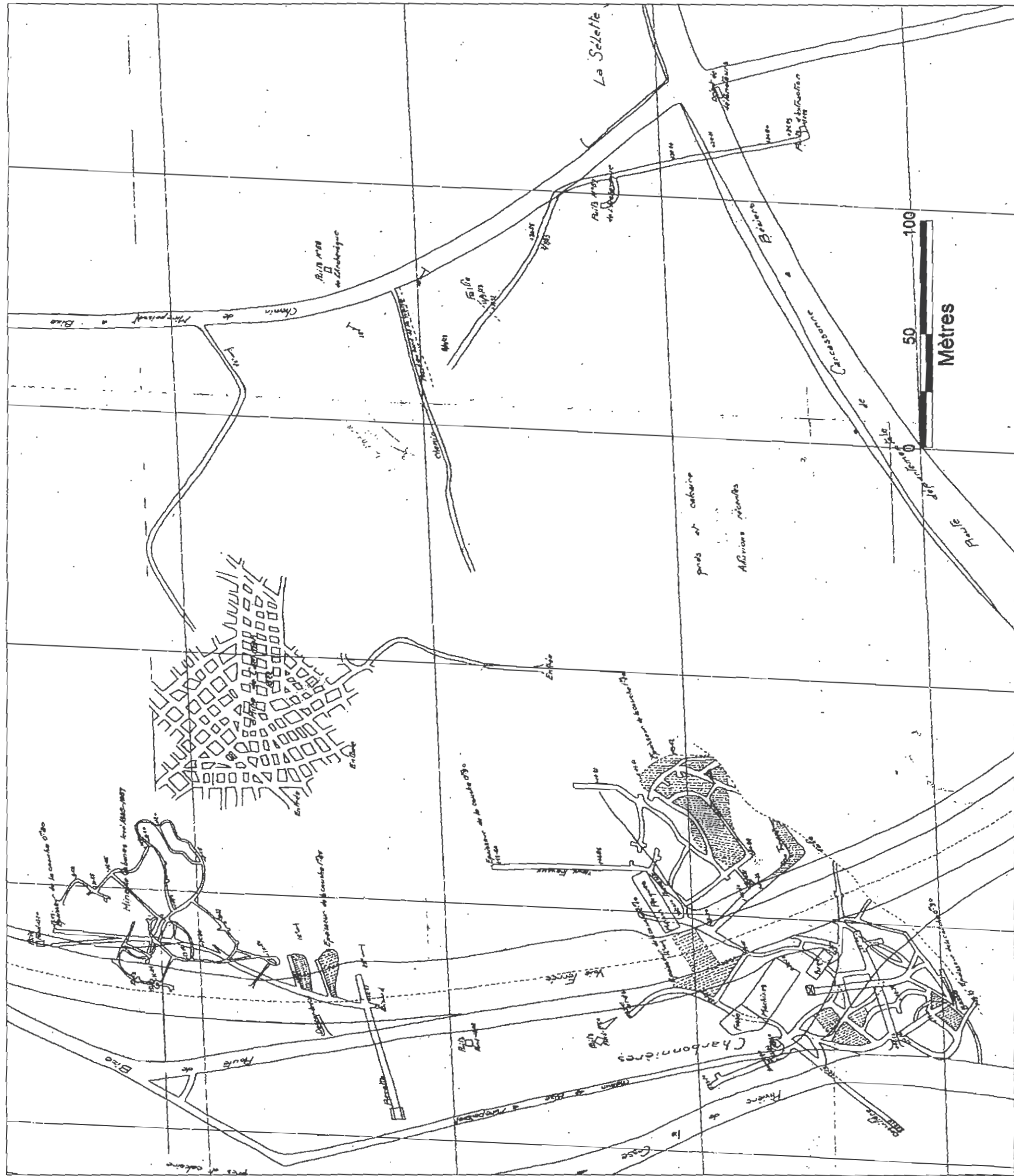
Plan 5c: Agrandissement des travaux du site de Belvèze



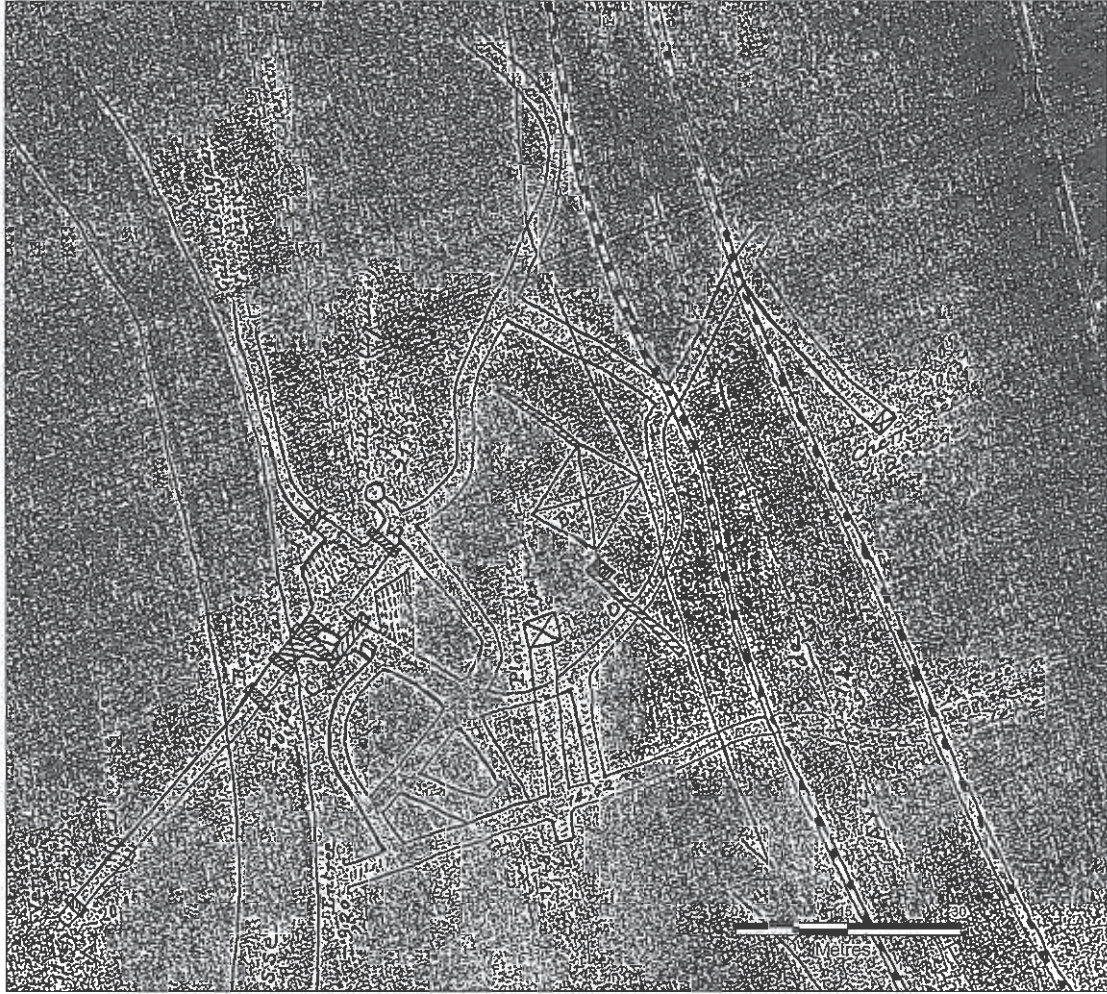
Plan 6a: Travaux du site des Tuileries [12]



Plan 6b: Agrandissement des travaux du site des Tuileries



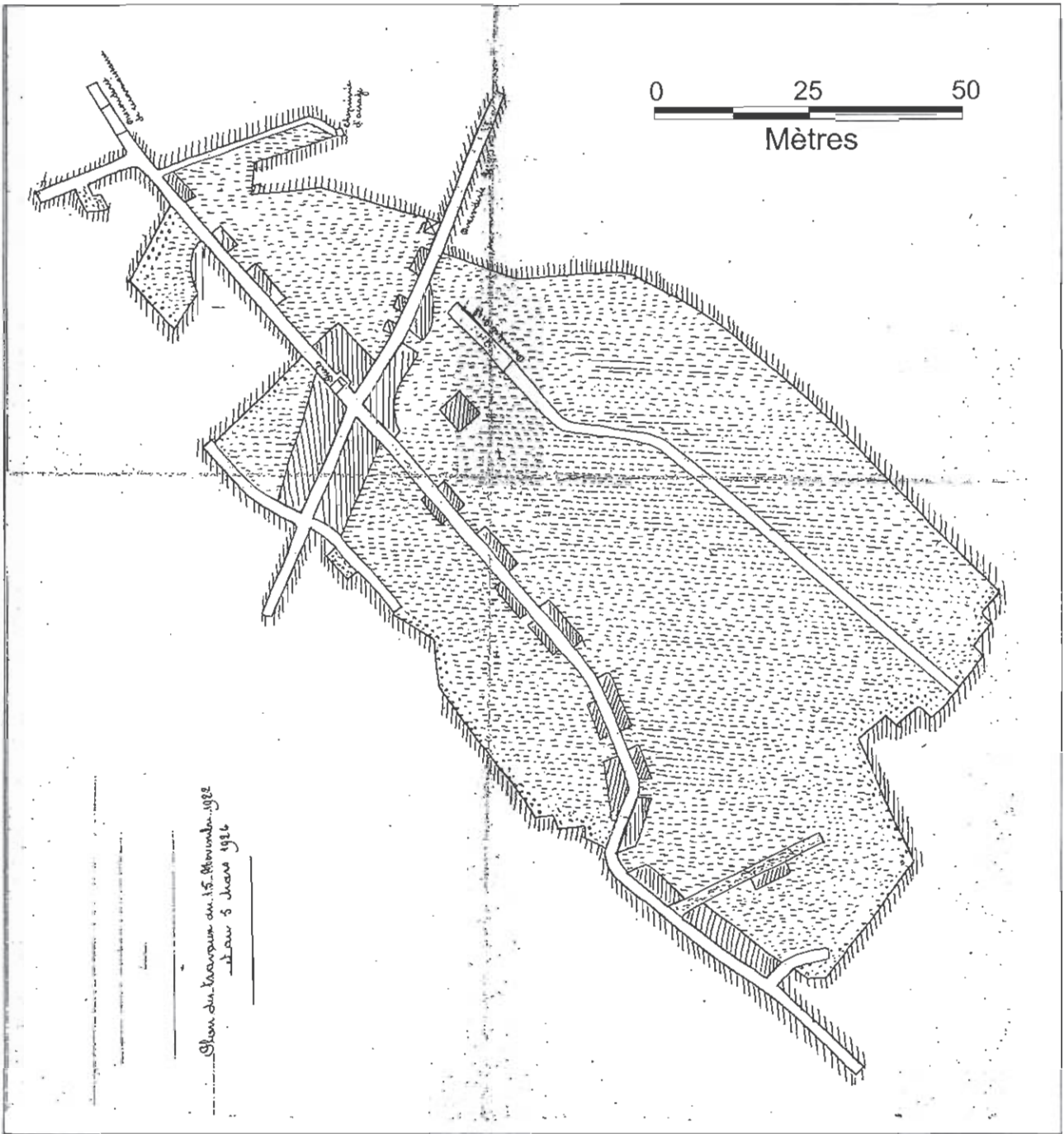
Plan 7a. Travaux des sites de Charbonnières, Cabanes, Camman et Sallette [6]



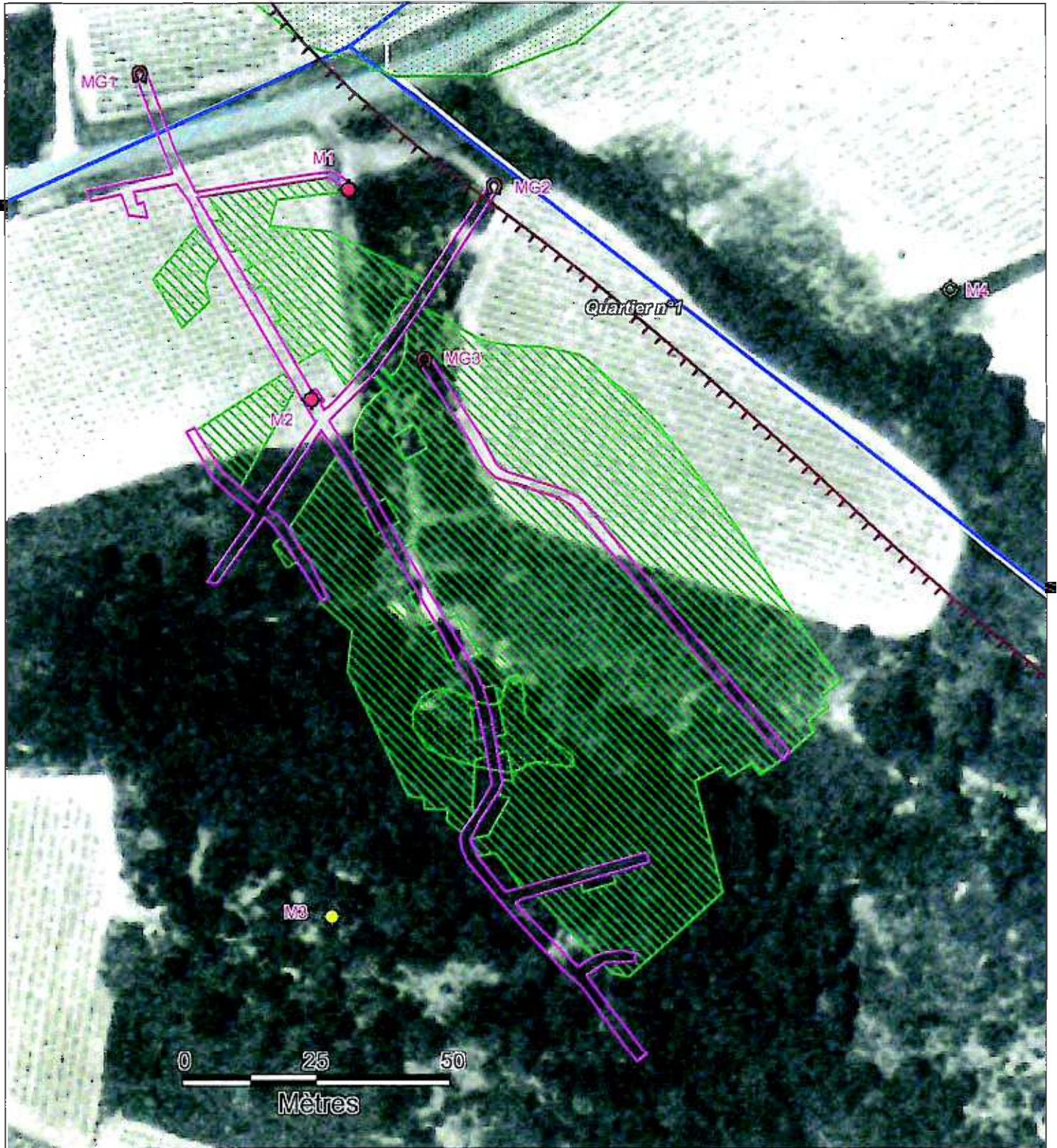
Plan 7b: Travaux du site de Charbonnières [5]



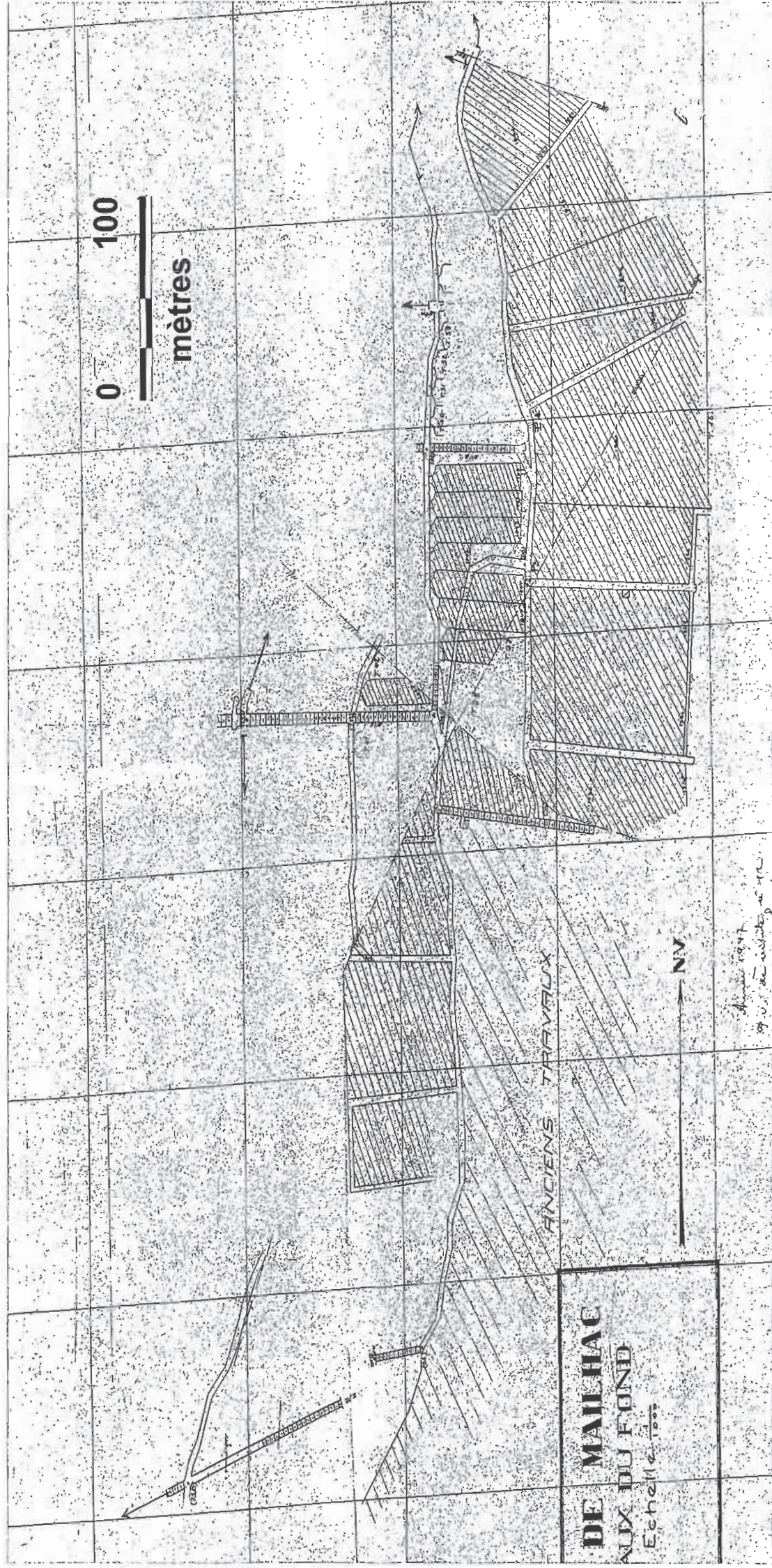
Plan 7c: Agrandissement des travaux des sites de Charbonnières, Cabanes, Camman et Sellette



Plan 8a: Travaux du site "Quartier 1" [23]



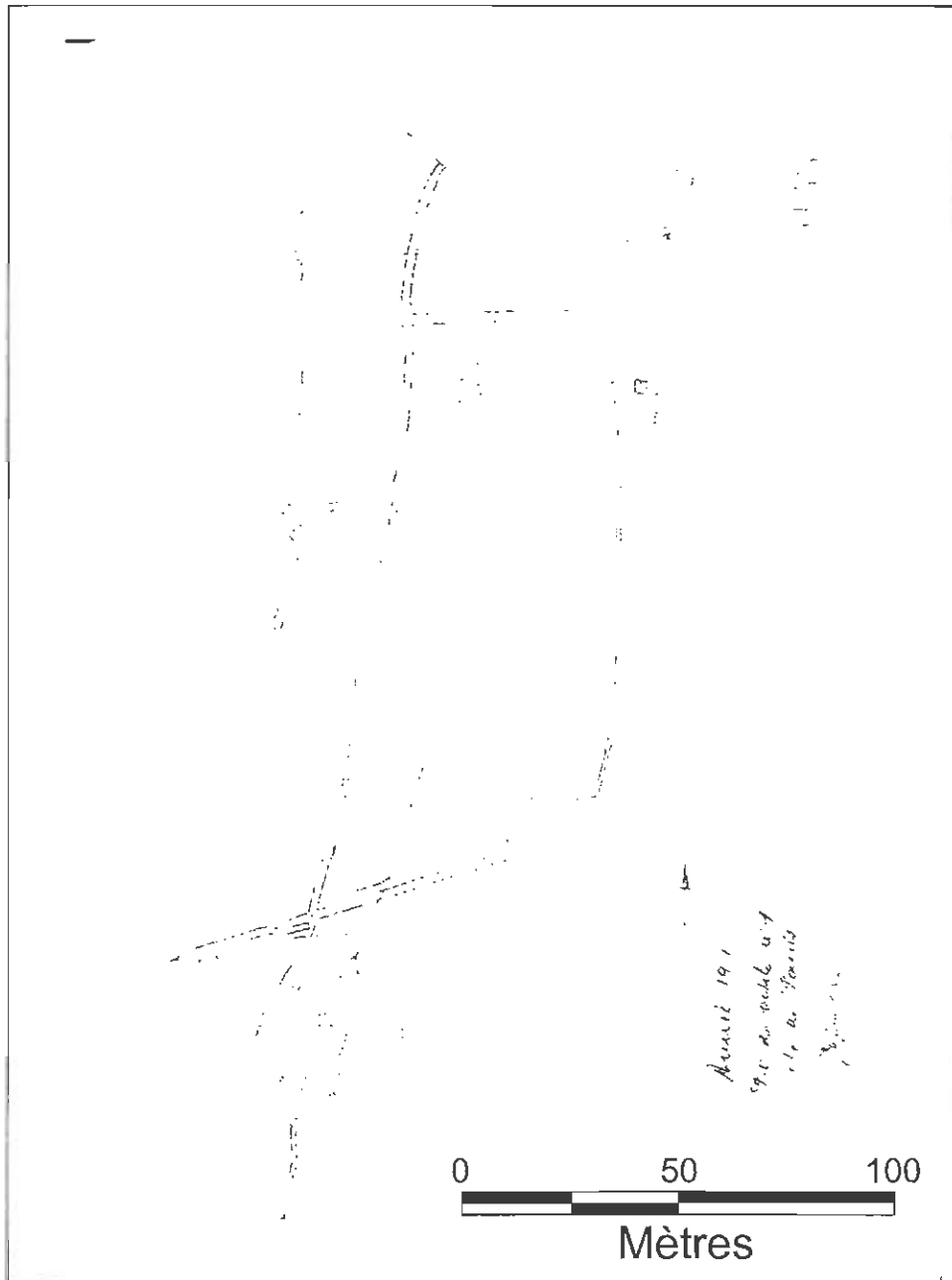
Plan 8b: Agrandissement des travaux du site "Quartier 1"



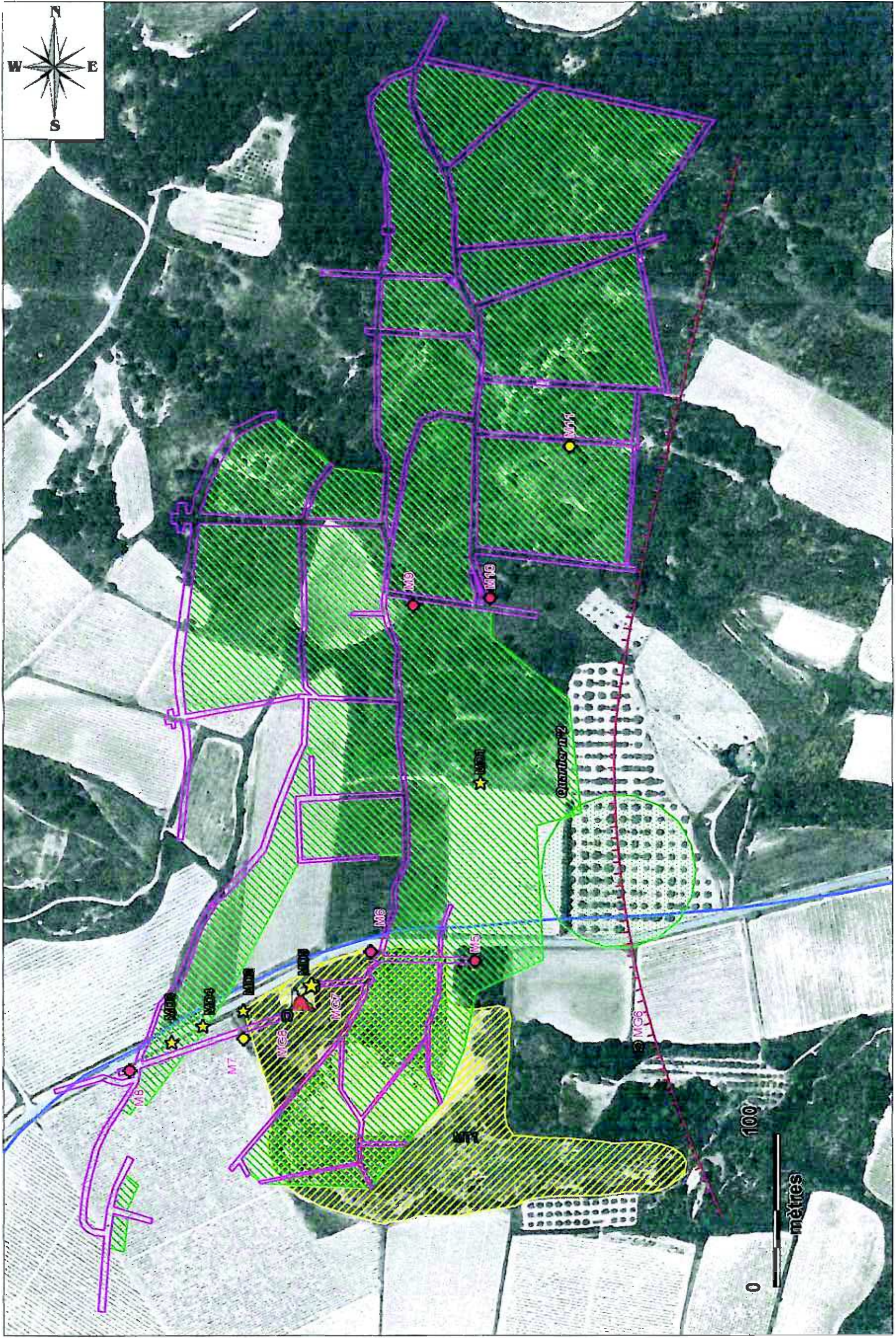
Plan 9a: Travaux du site "Quartier 2" [20]



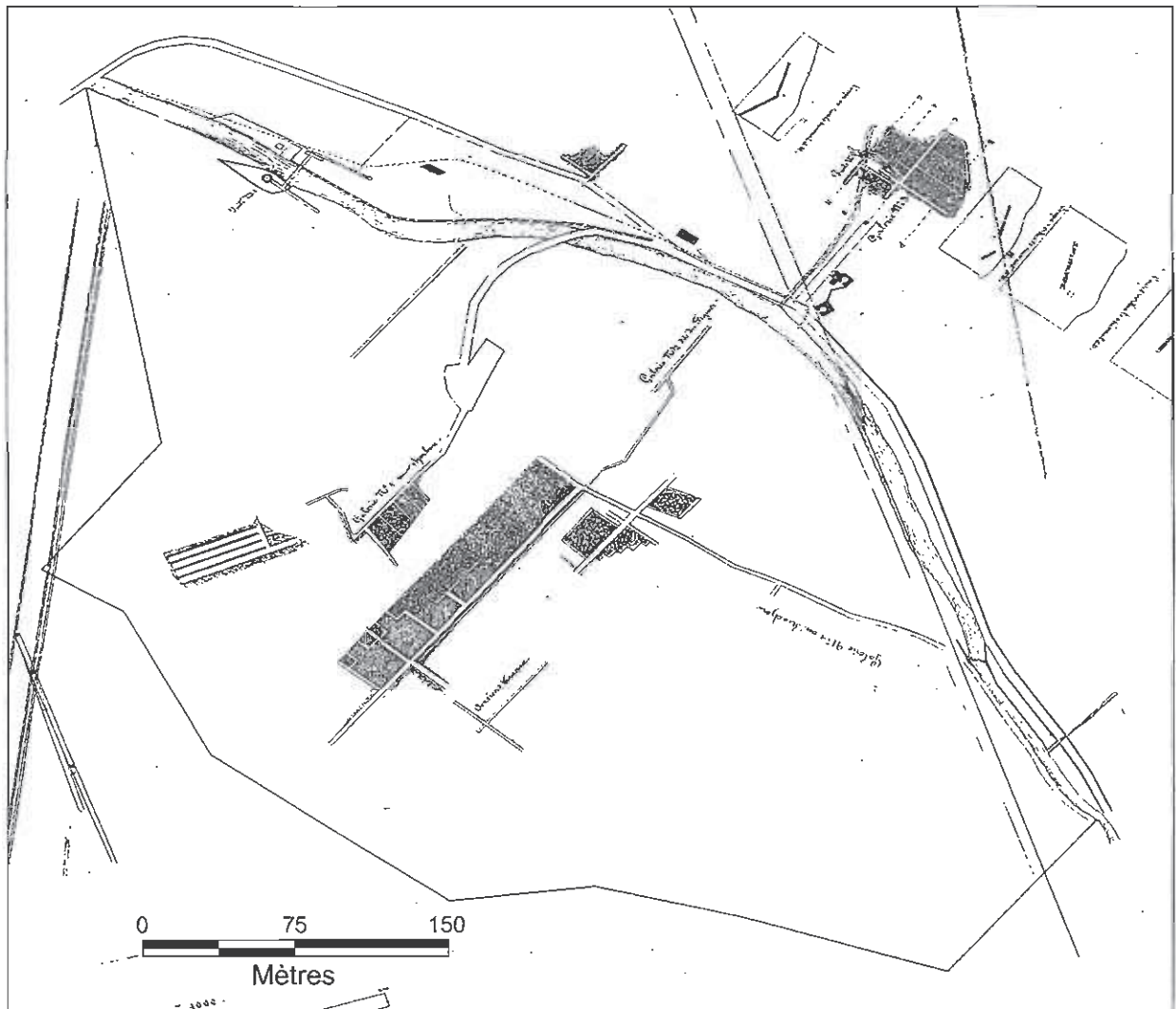
Plan 9b: Travaux du site "Quartier 2" [18]



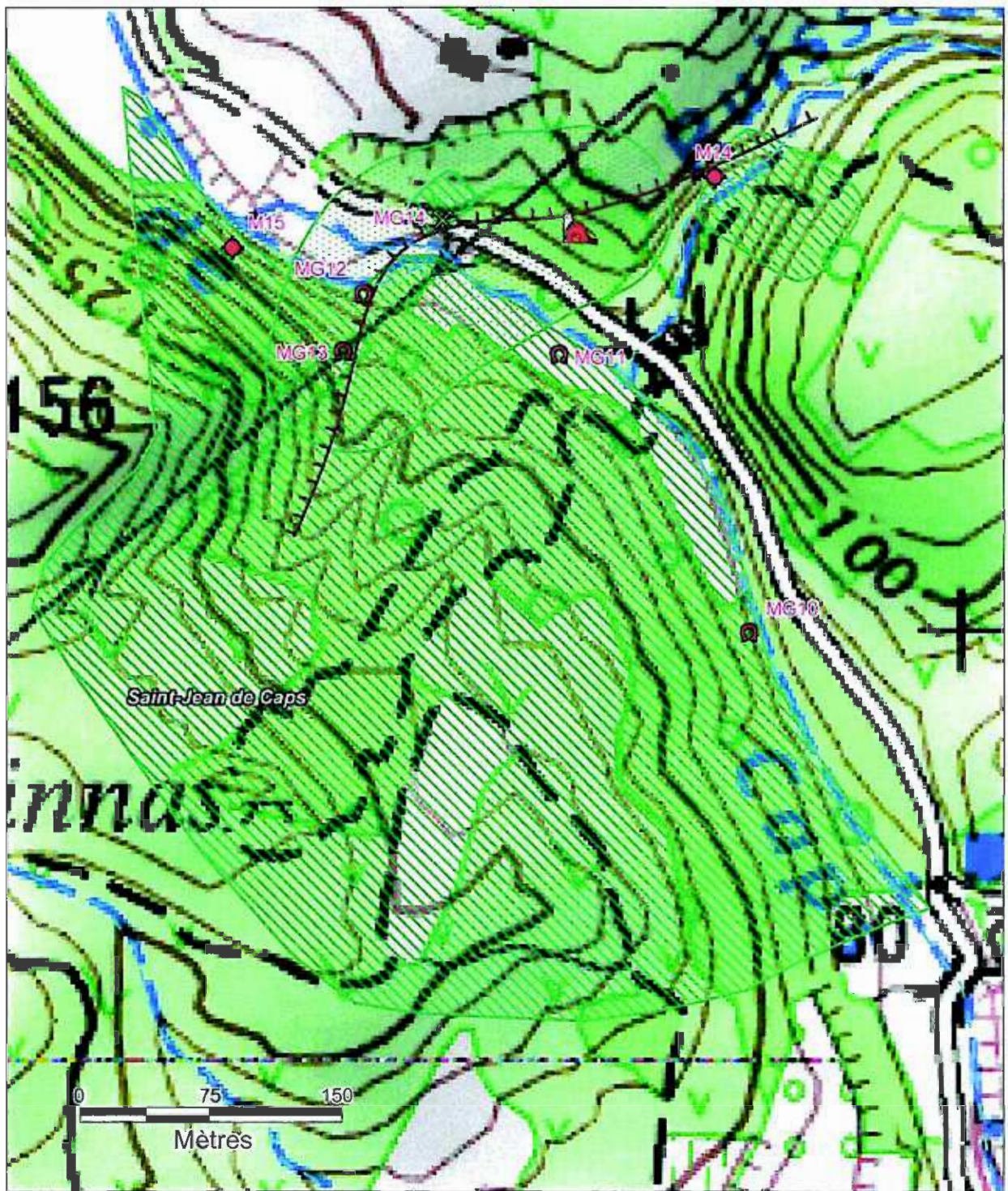
Plan 9c: Travaux du site "Quartier2" [21]



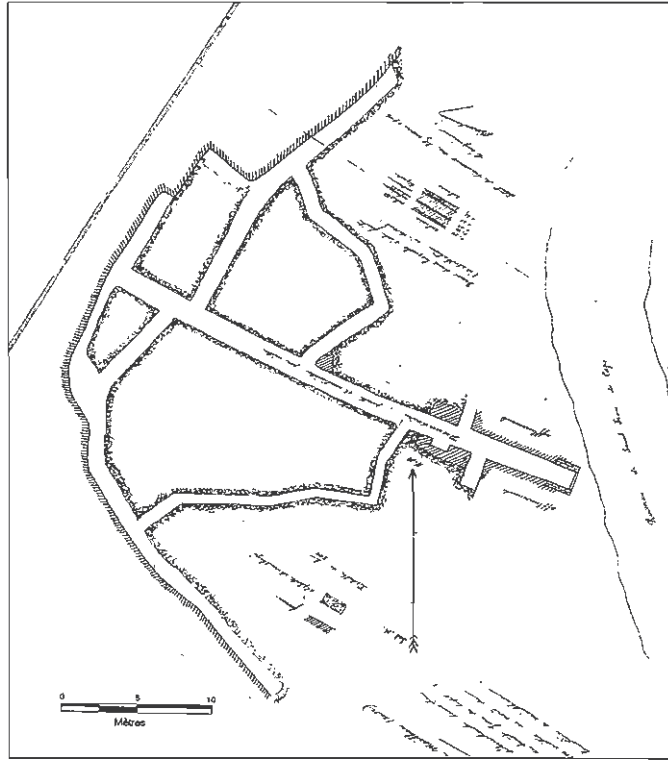
Plan 9d: Agrandissement des travaux du site "Quartier 2"



Plan 10a: Travaux du site de Saint-Jean de Caps [25]



Plan10b: Agrandissement des travaux du site de Saint-Jean de Caps



Plan 11a: Travaux du site "Nord cimetière" [22]



Plan 11b: Agrandissement des travaux du site "Nord cimetière"



Plan 12: Travaux du site de la Roueyre [27]

