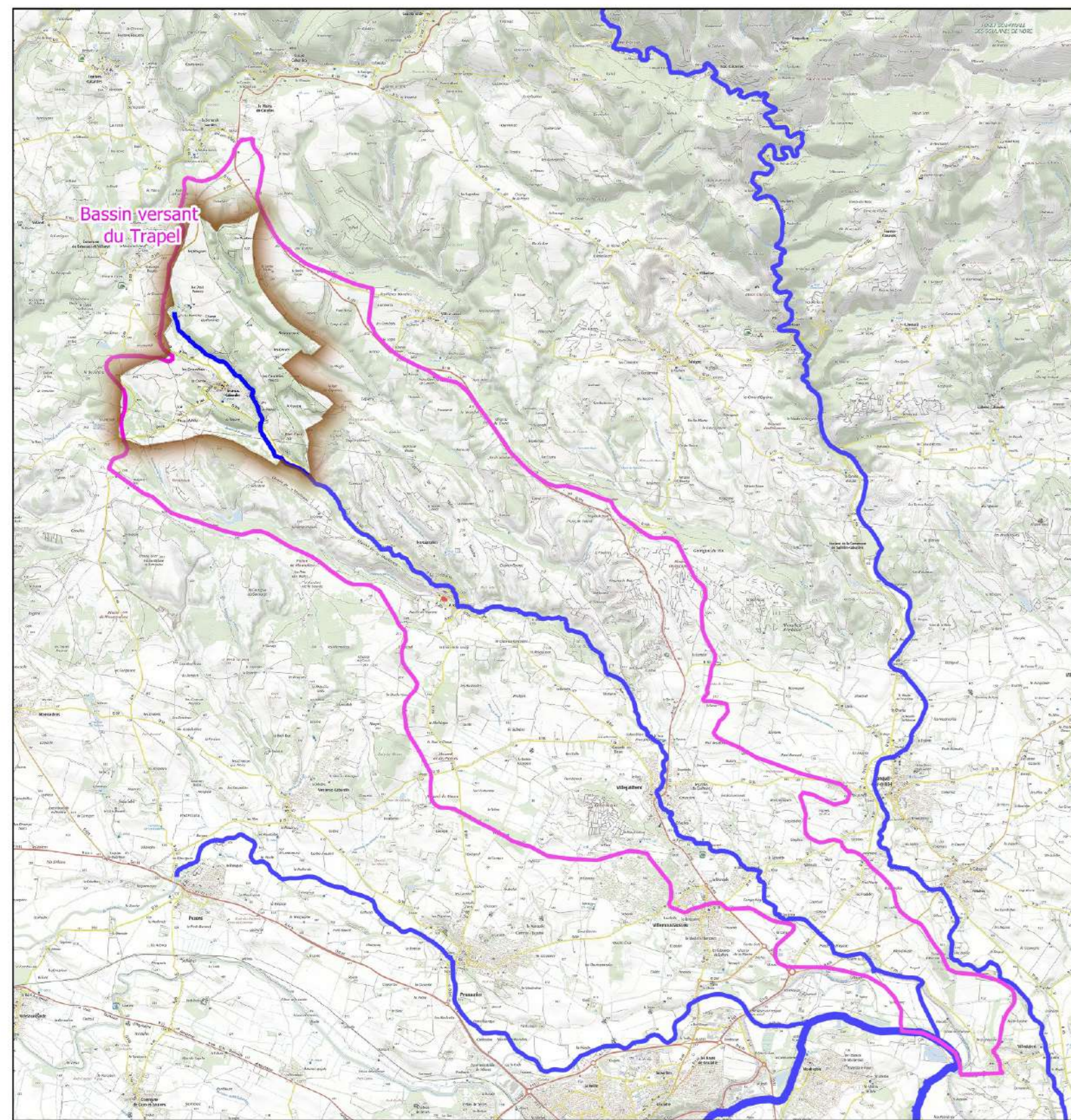


COMMUNE DE FRAISSE CABARDES  
Plan de Prévention des Risques Inondation  
Bassin versant du Trapel  
CARTE HYDROGÉOMORPHOLOGIQUE













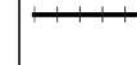


PROJET

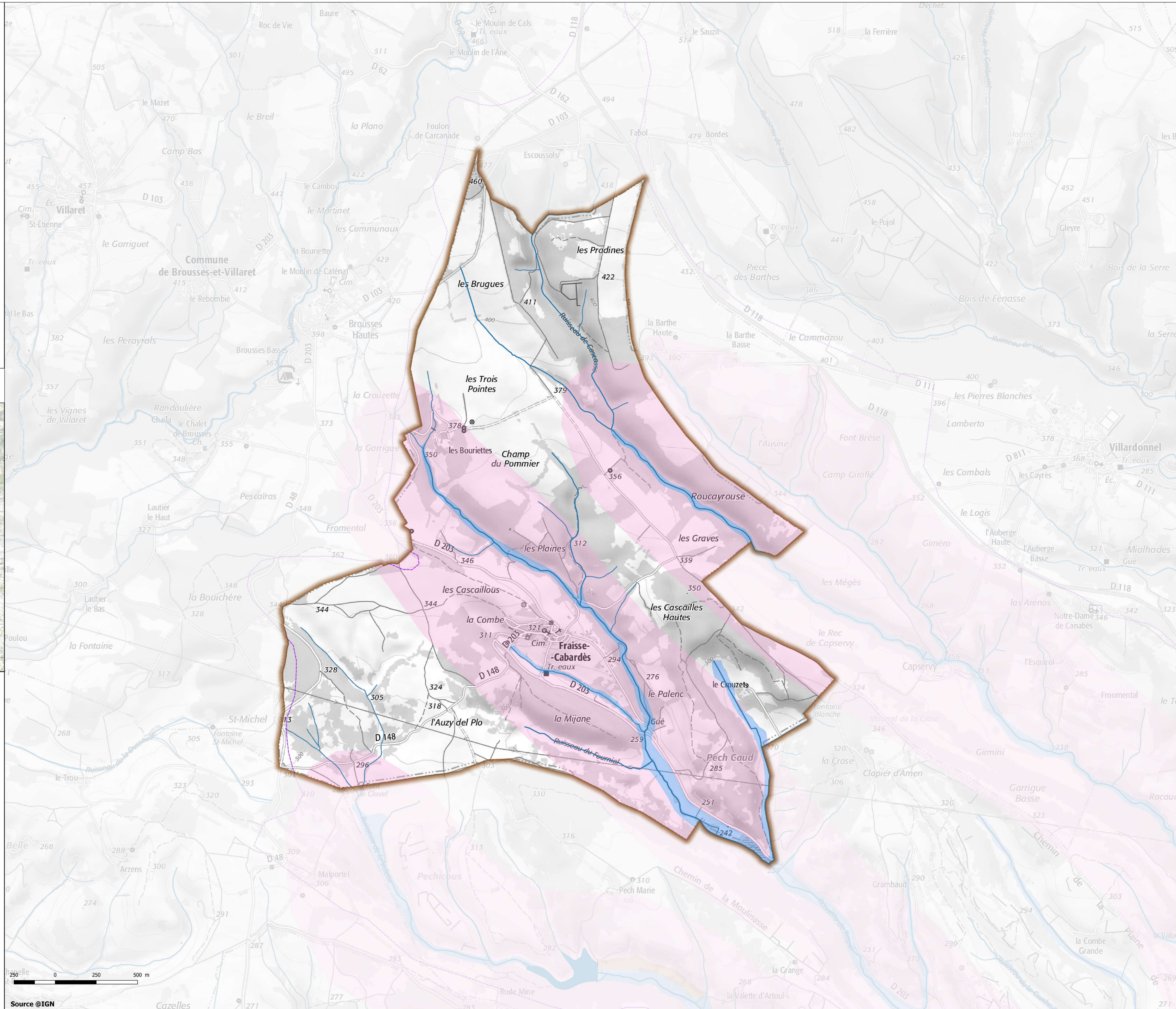
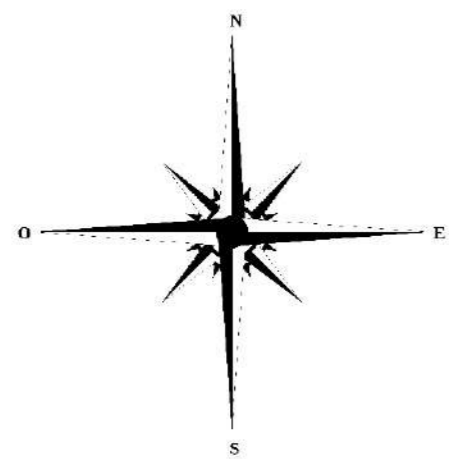
Echelle : 1 / 7500    Novembre 2022

PLANCHE N° 1  
(plan de situation)



LÉGENDE

- Limites morphologiques**
-  Limite communale
-  Bassin versant du Trapel
- Hydrographie**
-  Cours d'eau principaux
-  Cours d'eau secondaires
-  Canal du midi
- Plaine alluviale fonctionnelle**
-  Lit majeur exceptionnel
-  Lit majeur
-  Lit mineur / plan d'eau
- Terrains encaissants**
-  Colluvions
-  Terrasse alluviale
-  Versant
- Obstacles topographiques**
- Secteurs étudiés par SCE en 2020
-  Digue / merlon
-  Remblai routier
-  Ouvrage
-  Remblais



Source @IGN