

COMMUNE DE SALLELES-CABARDES

Porter à connaissance

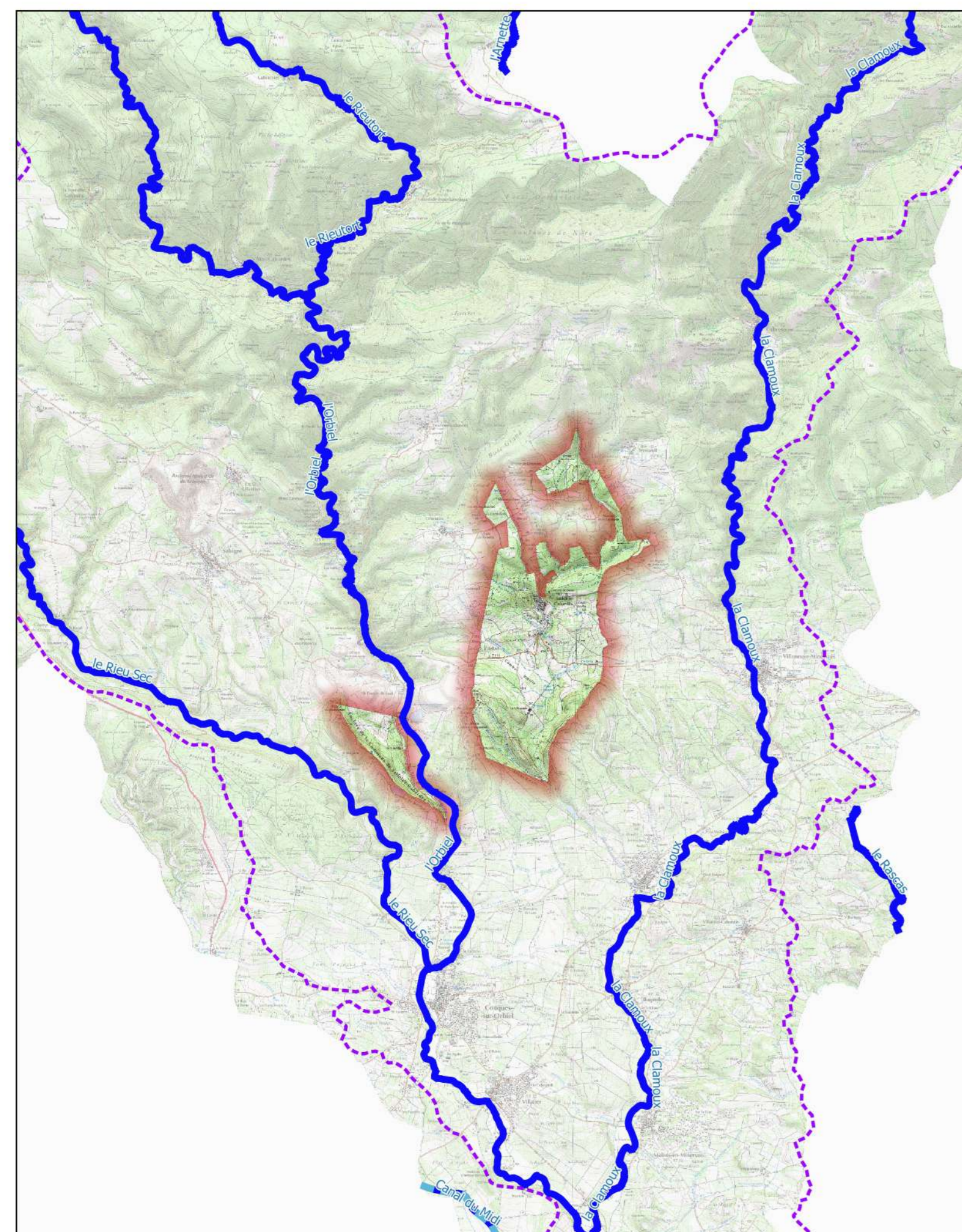
Bassin versant de l'Orbiel-Clamoux

CARTE DES ALÉAS INONDATION









Echelle : 1/ 7500

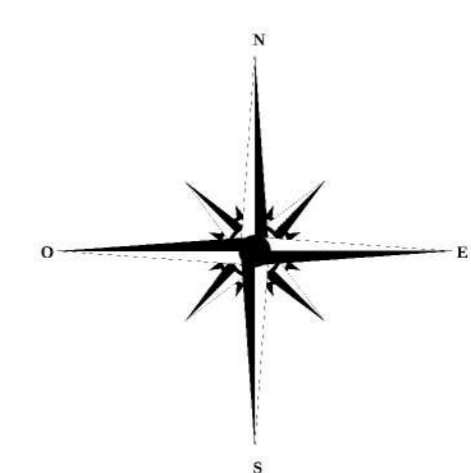
Janvier 2024

**PLANCHE N° 1**  
(plan de situation)



**LÉGENDE**

-  Limites communales
-  Bâtiments
-  Niveau d'eau pour la crue de référence (mètre NGF)
- Aléa inondation**
-  Aléa fort
-  Aléa modéré
-  Zone inondable par hydrogéomorphologie
-  Aléa faible ruissellement
-  Aléa très fort - dique



Date de finalisation de la carte : 2024-01-19

0 100 200 m

Source @IGN

