

COMMUNE DE VILLARZEL-CABARDES

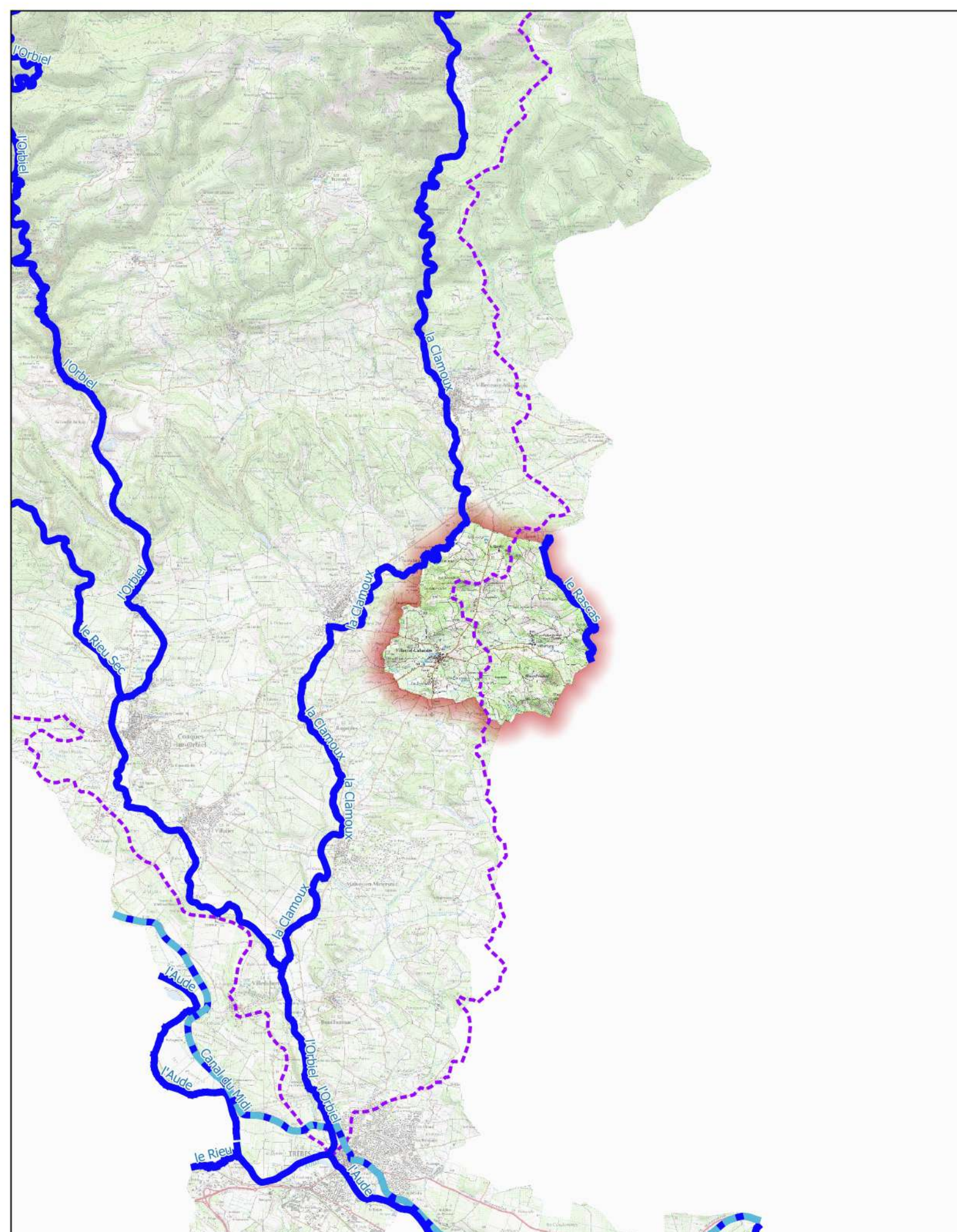
Porter à connaissance

Bassin versant de l'Orbiel-Clamoux









CARTE DES ALÉAS INONDATION

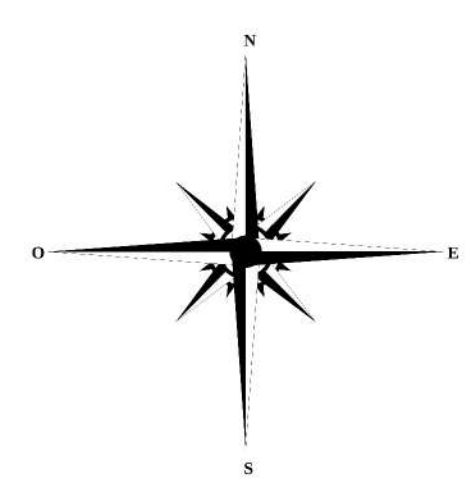
Echelle : 1/ 5000    Novembre 2023

**PLANCHE N° 1**  
(plan de situation)



**LÉGENDE**

-  Limites communales
-  Bâtiments
-  Niveau d'eau pour la crue de référence (mètre NGF)
- Aléa inondation**
-  Aléa fort
-  Aléa modéré
-  Zone inondable par hydrogéomorphologie
-  Aléa faible ruissellement
-  Aléa très fort - digue



Date de finalisation de la carte : 2023-09-13

0 100 200 m

Source @IGN

