

COMMUNE DE VILLANIERE

Porter à connaissance

Bassin versant Orbiel - Clamoux

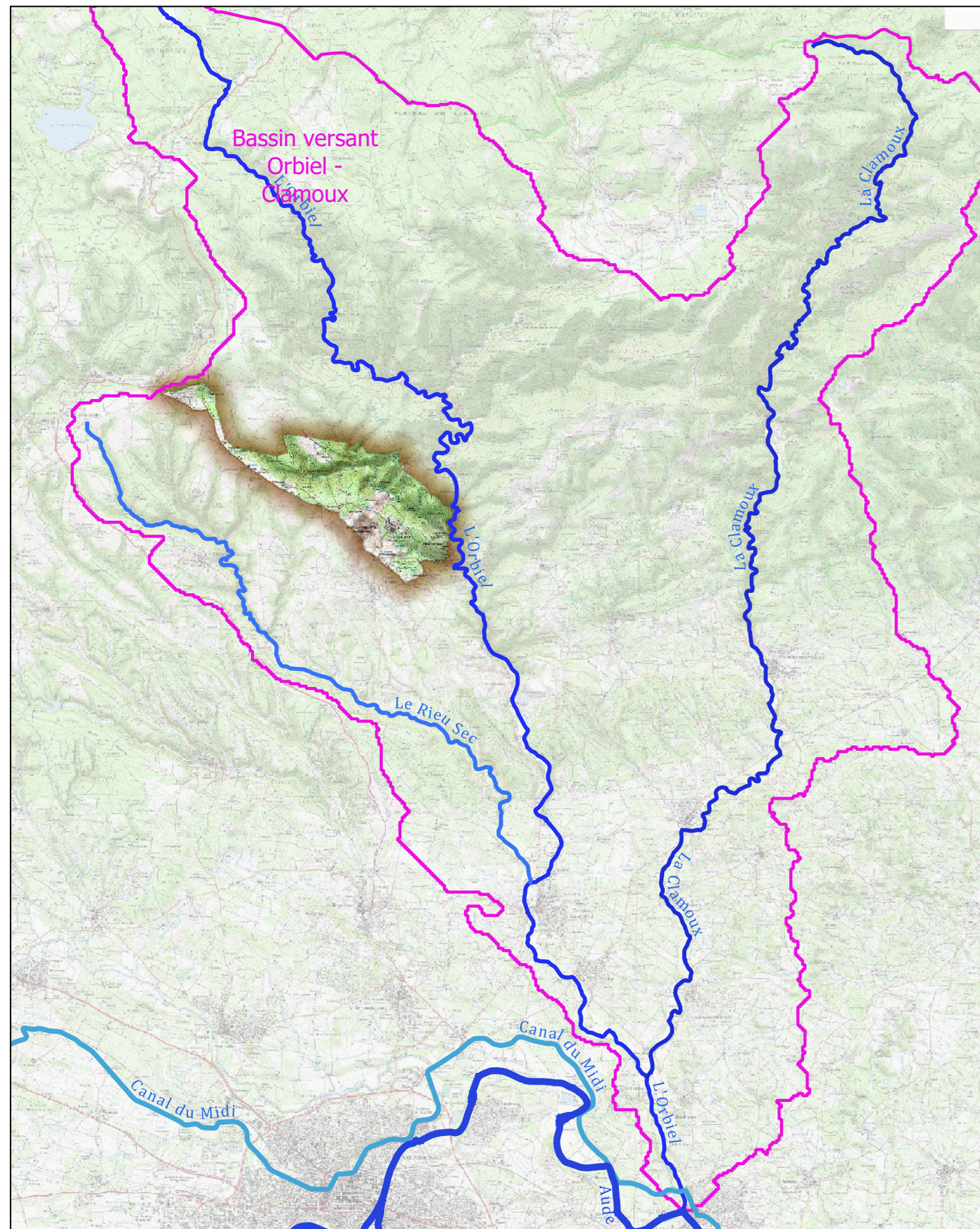
CARTE DES ALÉAS INONDATION

ZOOM








Echelle 1:5 000

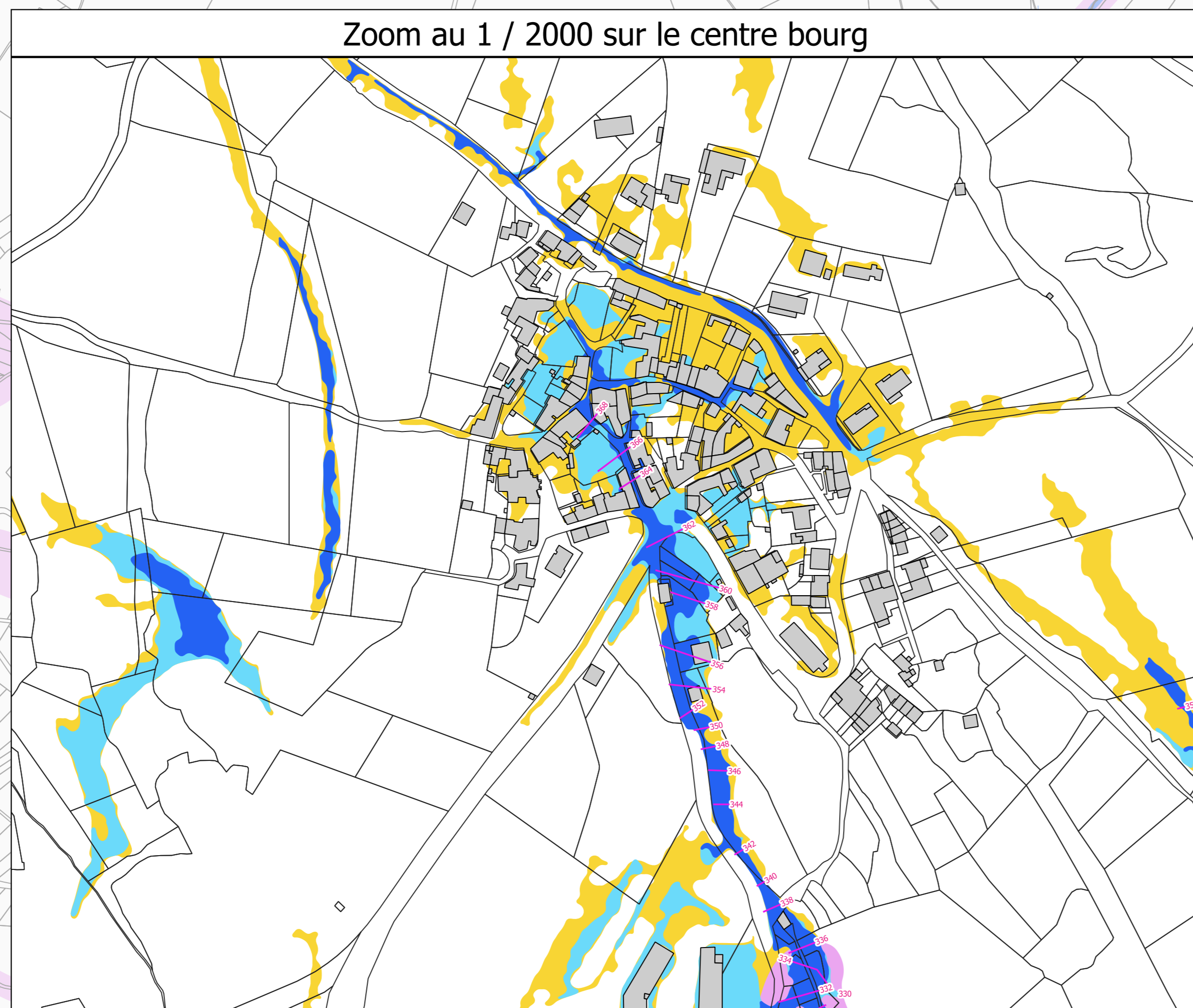
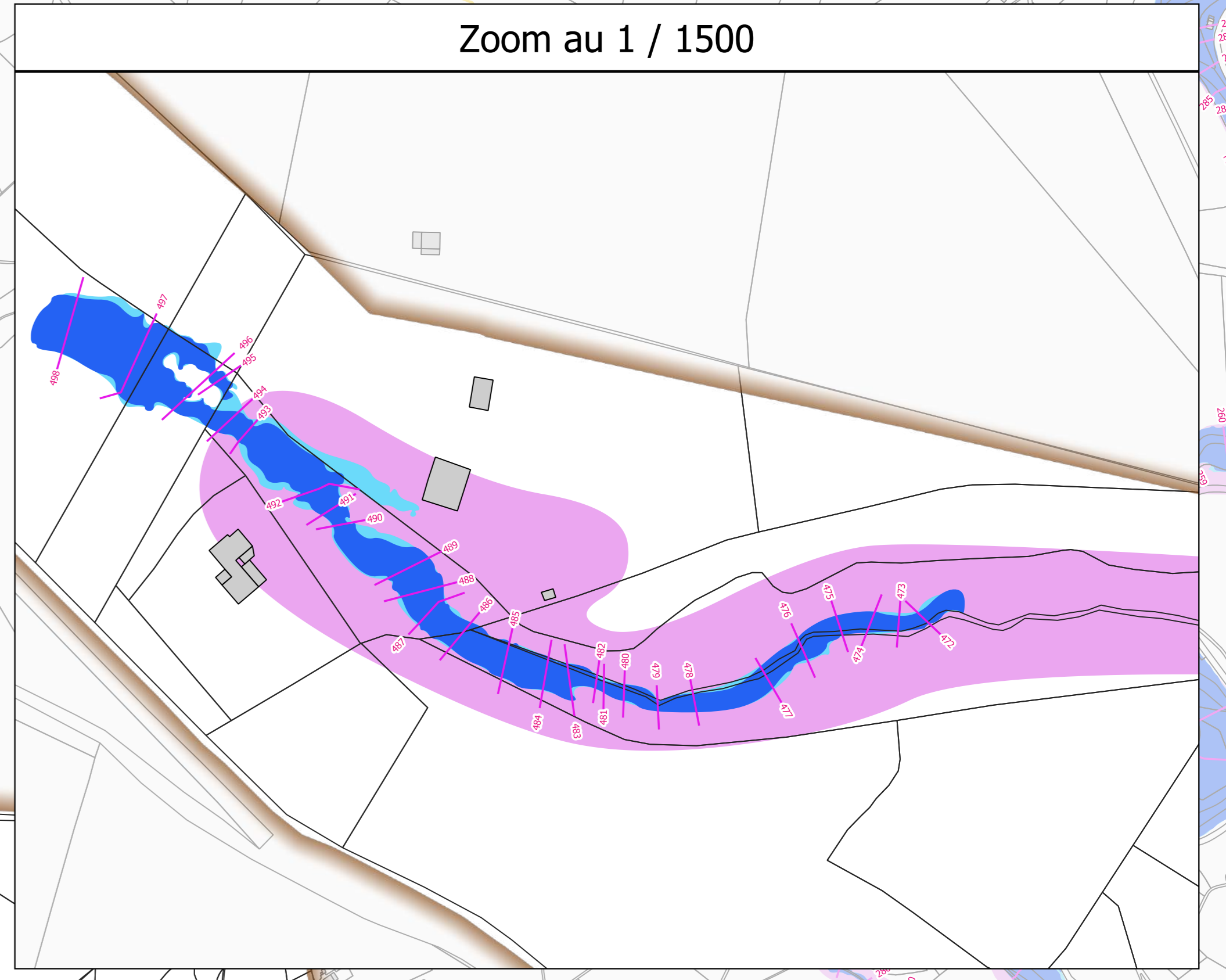
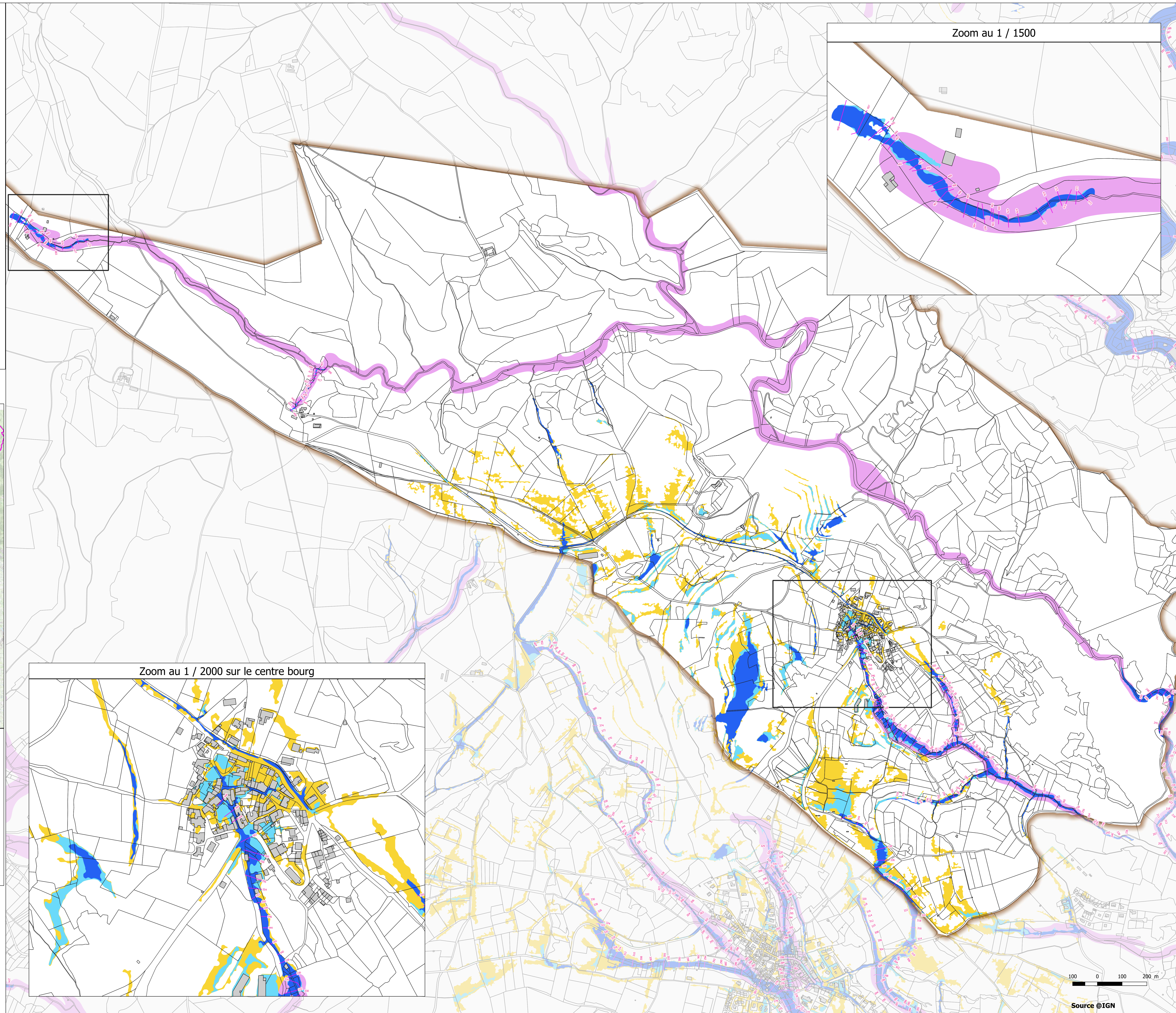
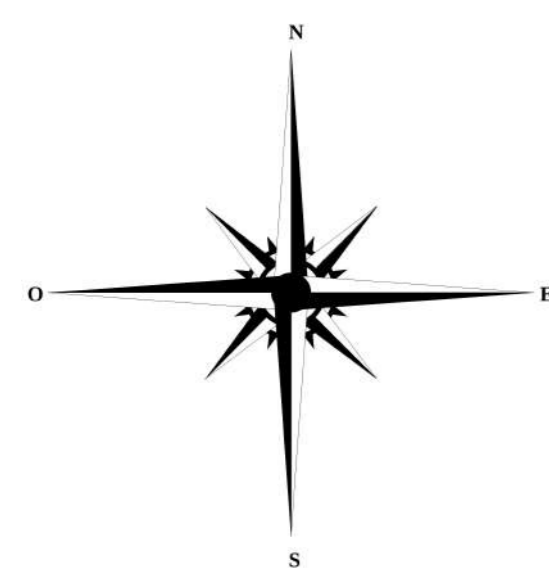
novembre 2023

PLAN DE SITUATION



LÉGENDE

-  Limite communale
-  Batiments
-  Niveau d'eau de la crue de référence (mètre NGF)
- Aléa inondation**
-  Aléa fort
-  Aléa modéré
-  Zone inondable par hydrogéomorphologie
-  Aléa faible ruissellement



100 0 100 200 m

Source @IGN