

COMMUNE DE MAS-CABARDES

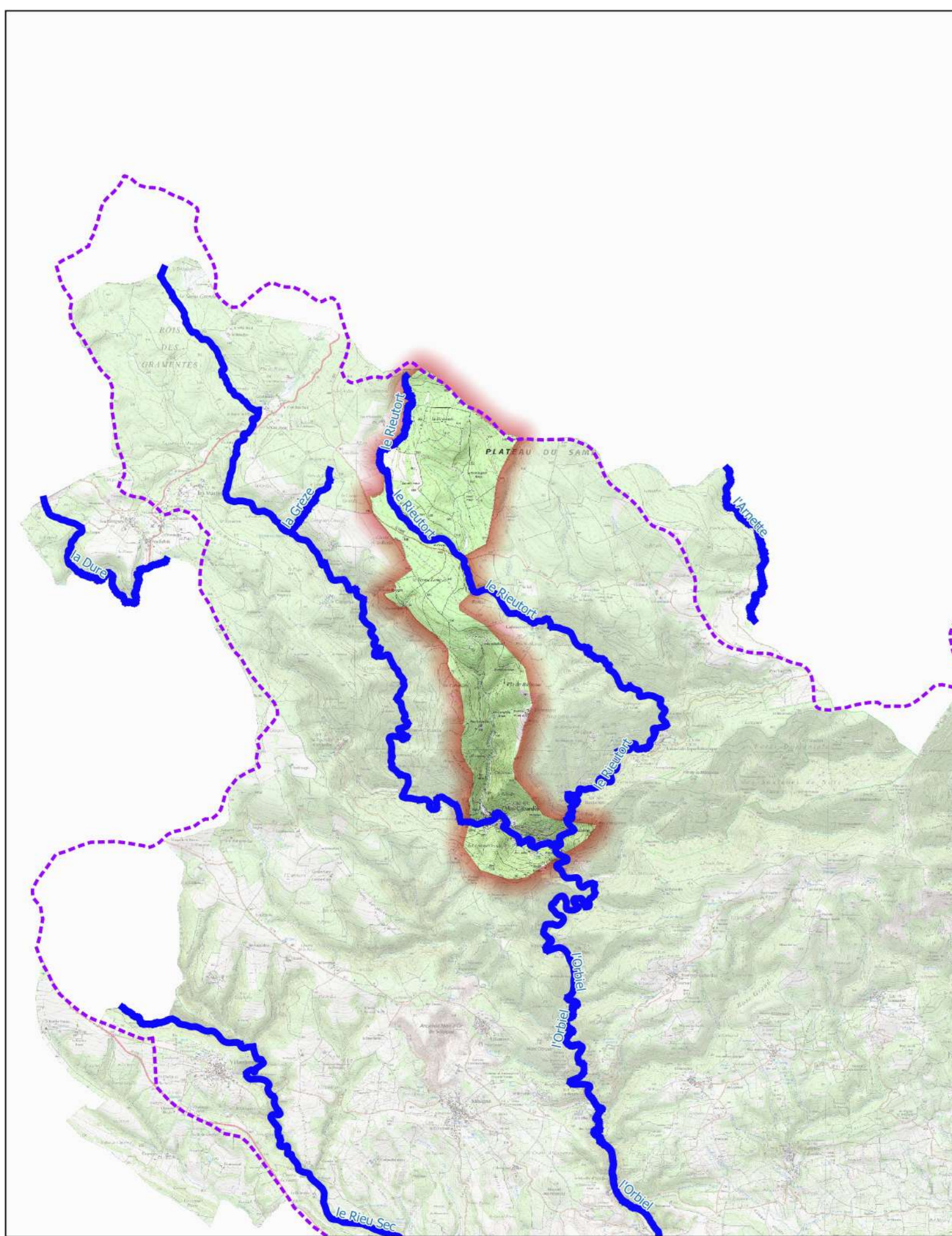
Porter à connaissance

Bassin versant de l'Orbiel-Clamoux








CARTE DES ALÉAS INONDATION

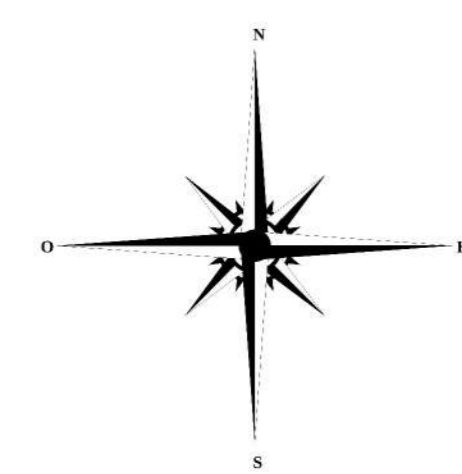
Echelle : 1/ 10000 Novembre 2023

PLANCHE N° 1
(plan de situation)



LÉGENDE

-  Limites communales
-  Bâtiments
- Aléa inondation**
-  Aléa fort
-  Aléa modéré
-  Zone inondable par hydrogéomorphologie
-  Aléa faible ruissellement
-  Aléa très fort - digue



Date de finalisation de la carte : 2023-09-13

0 100 200 m

Source @IGN

