

COMMUNE DE LIMOUSIS

Porter à connaissance

Bassin versant Orbiel - Clamoux

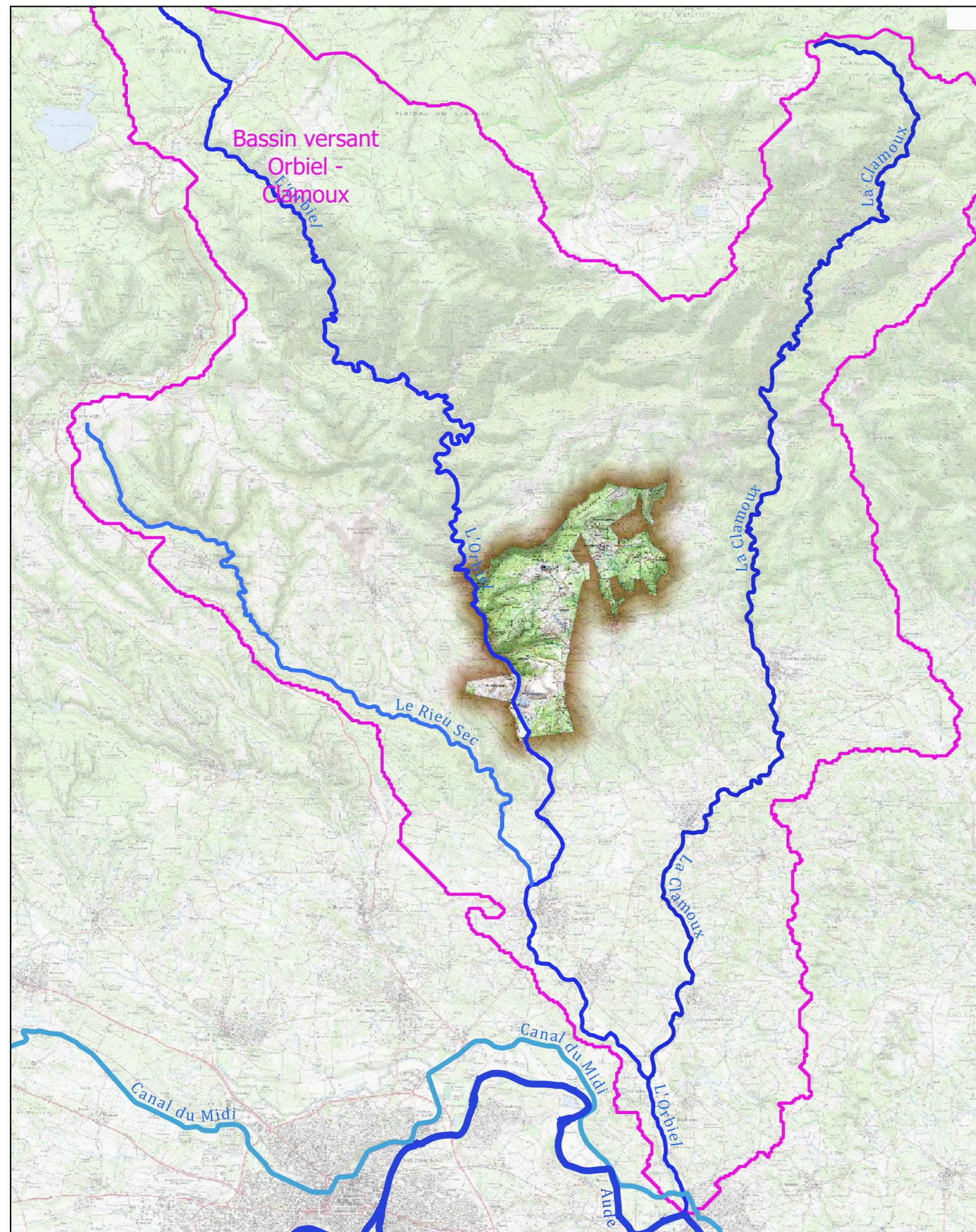
CARTE DES ALÉAS INONDATION

ZOOM








Echelle 1:6 500

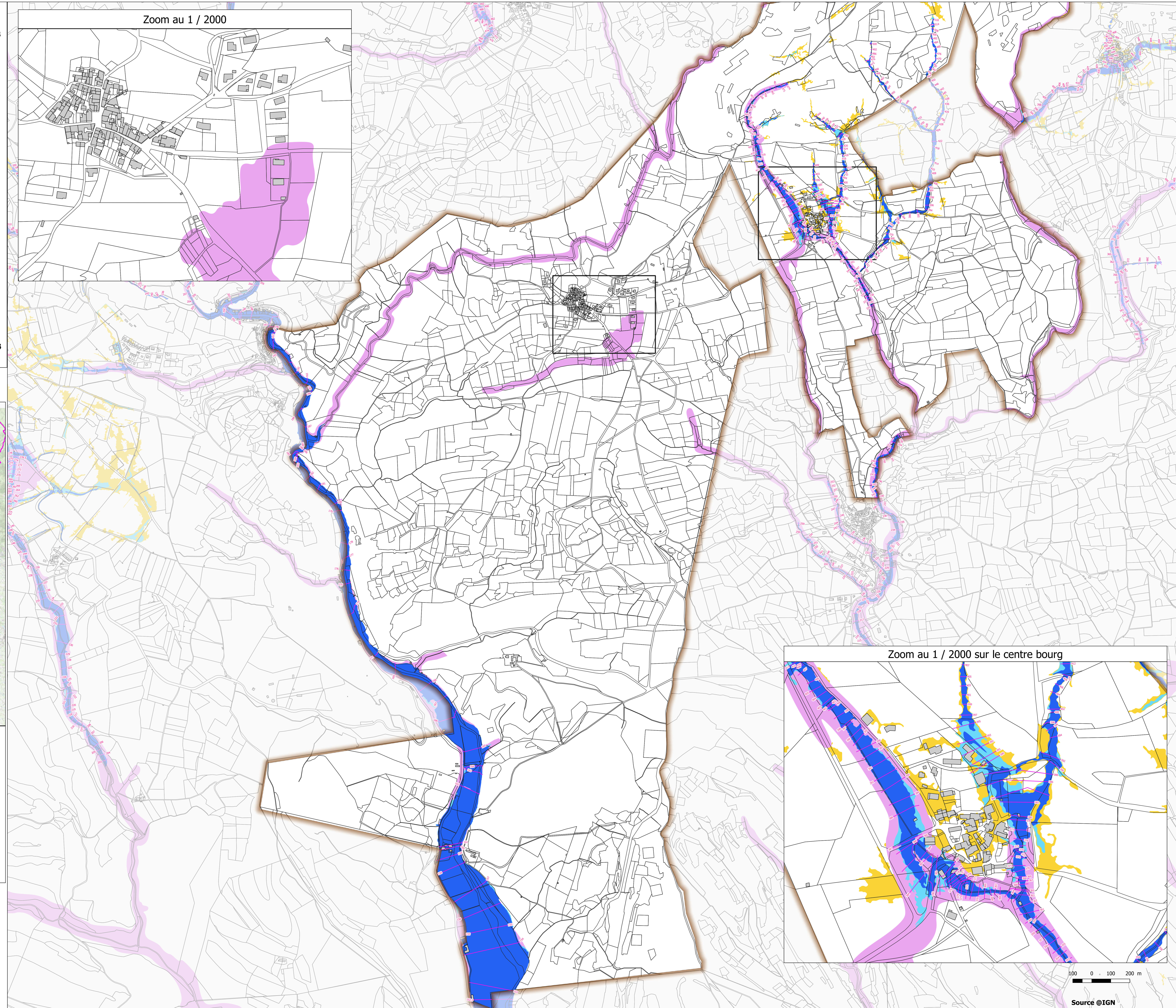
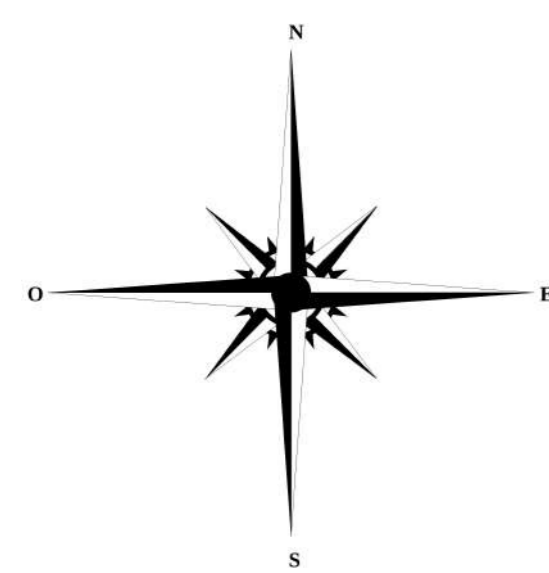
novembre 2023

PLAN DE SITUATION

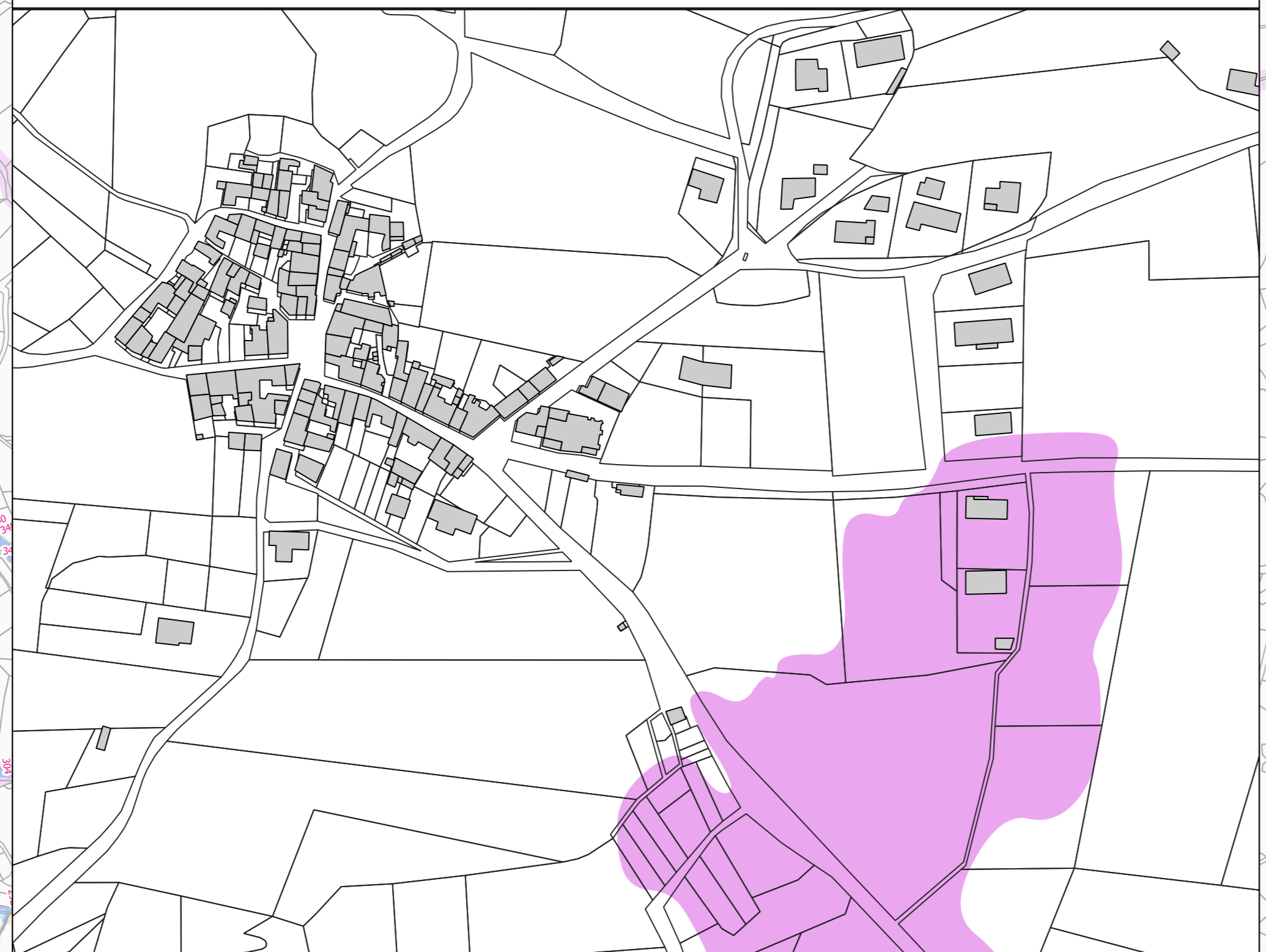


LÉGENDE

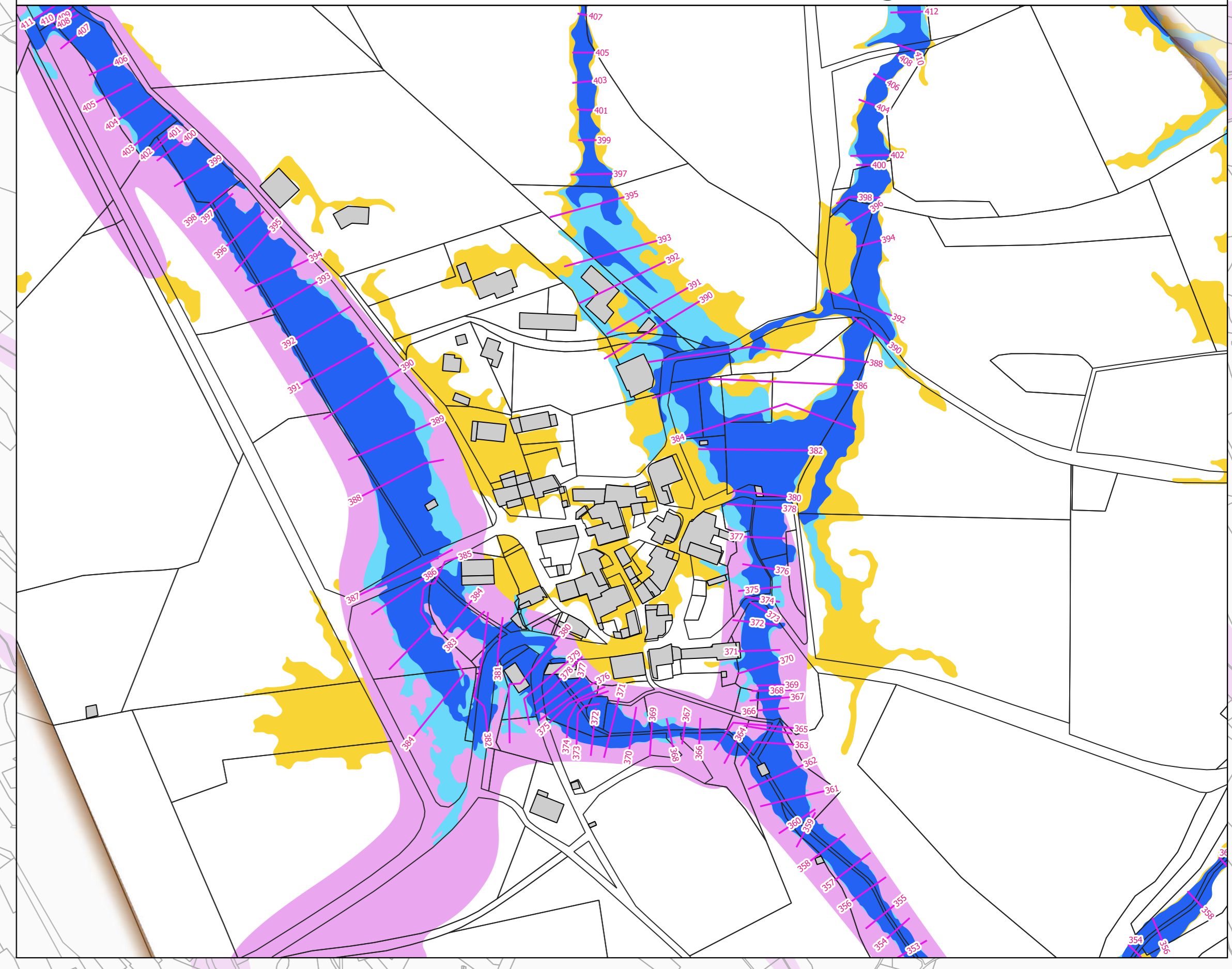
-  Limite communale
-  Batiments
-  Niveau d'eau de la crue de référence (mètre NGF)
- Aléa inondation**
-  Aléa fort
-  Aléa modéré
-  Zone inondable par hydrogéomorphologie
-  Aléa faible ruissellement



Zoom au 1 / 2000



Zoom au 1 / 2000 sur le centre bourg



100 0 100 200 m

Source @IGN