

COMMUNE DE LASTOURS

Porter à connaissance

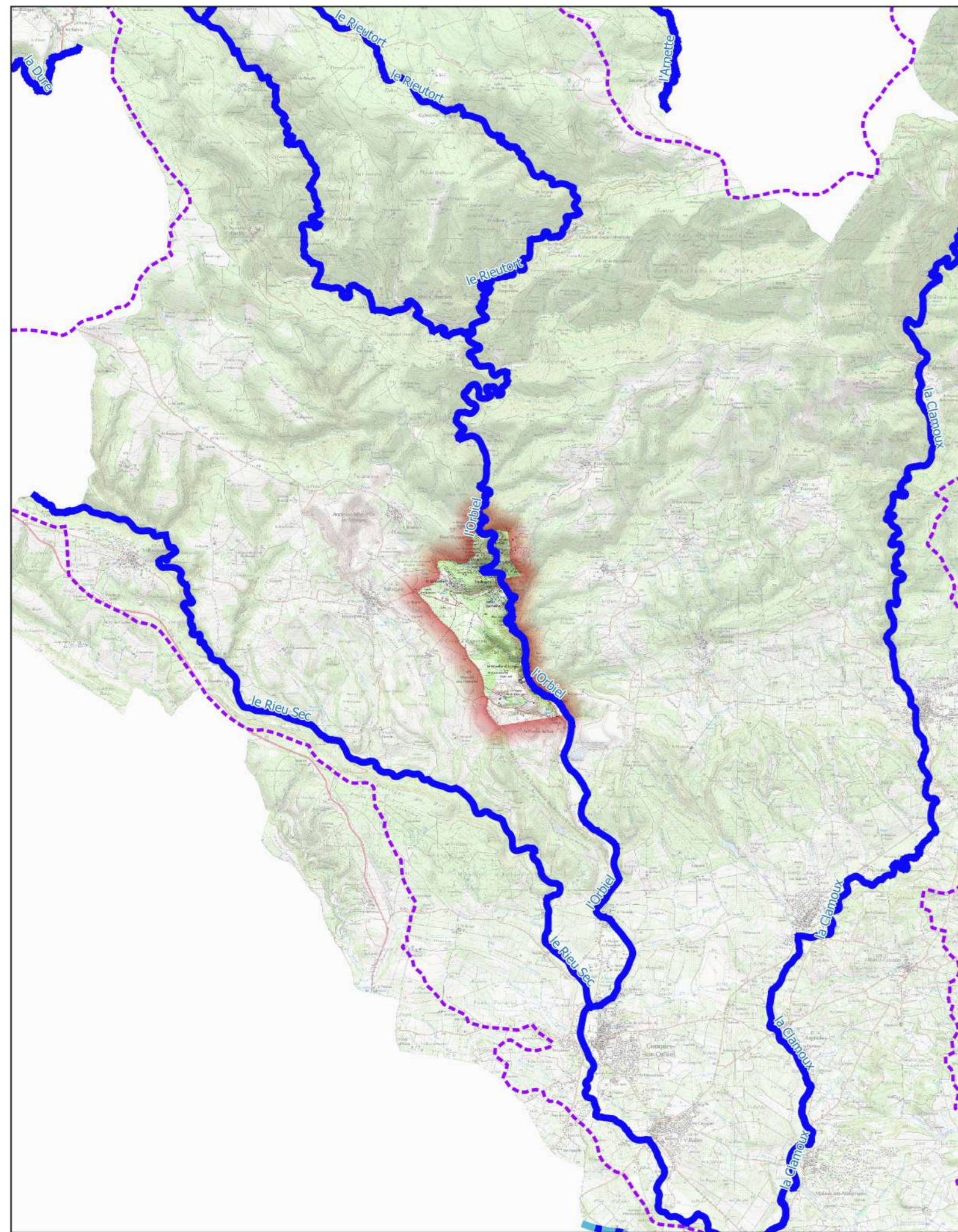
Bassin versant de l'Orbiel-Clamoux

CARTE DES ALÉAS INONDATION




Echelle : 1/ 5000






Novembre 2023

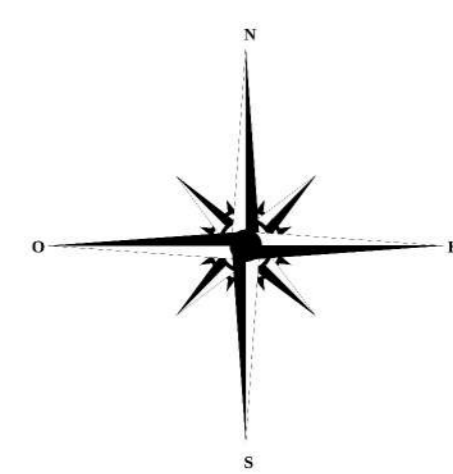
PLANCHE N° 1
(plan de situation)



LÉGENDE

-  Limites communales
-  Bâtiments
-  Niveau d'eau pour la crue de référence (mètre NGF)

- Aléa inondation**
-  Aléa fort
 -  Aléa modéré
 -  Zone inondable par hydrogéomorphologie
 -  Aléa faible ruissellement
 -  Aléa très fort - digue



Date de finalisation de la carte : 2023-09-13

0 100 200 m

Source @IGN

