

COMMUNE DE TREBES

Porter à connaissance

Bassin versant Orbier - Clamoux

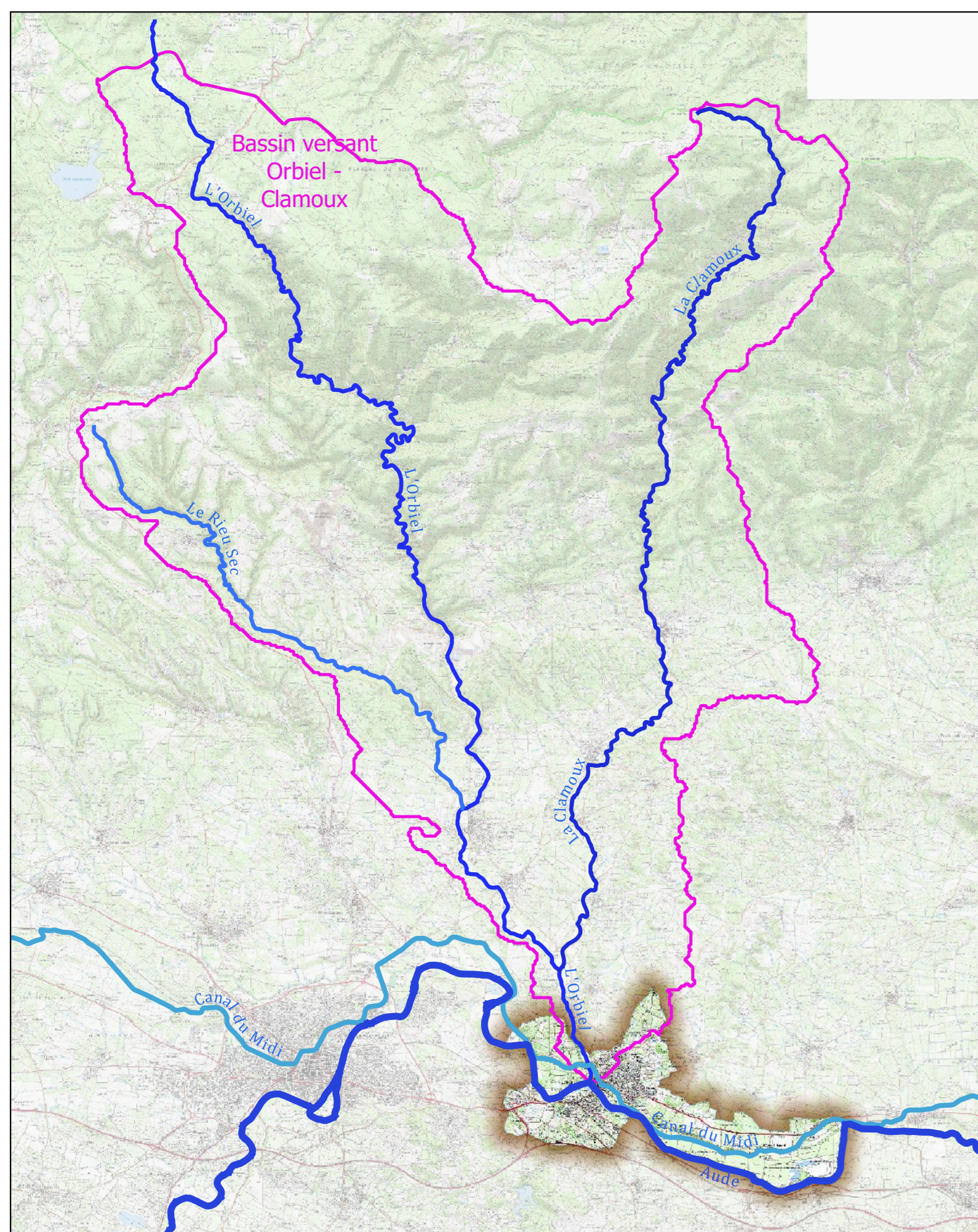
CARTE DES ALÉAS INONDATION

ZOOM









Echelle 1:10 000

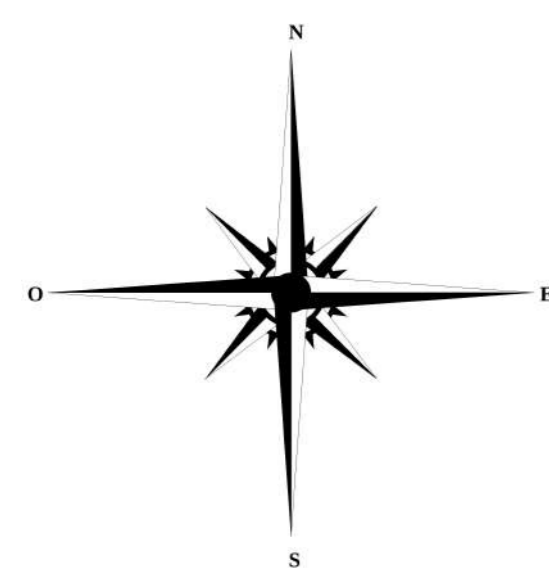
novembre 2023

PLAN DE SITUATION

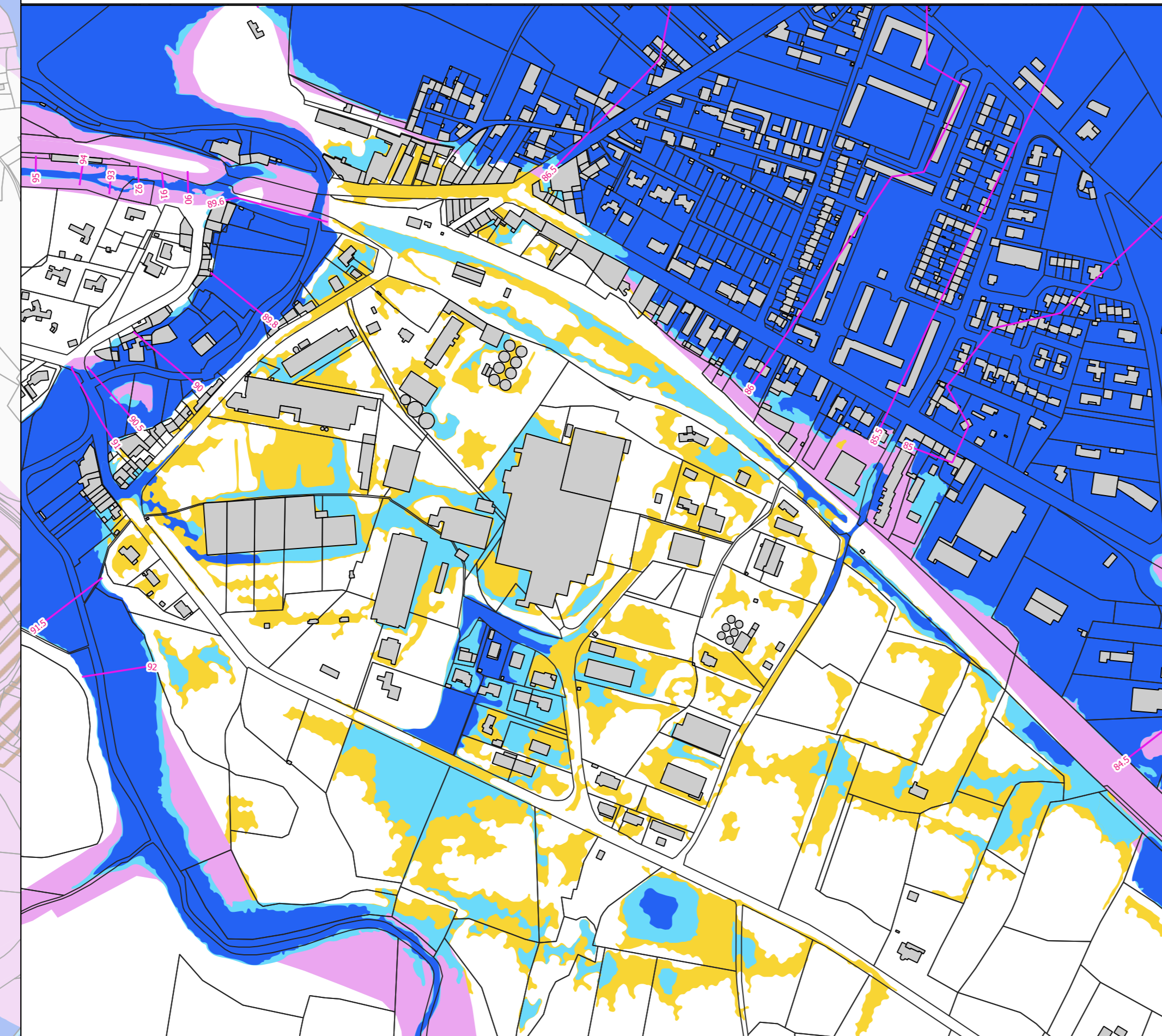


LÉGENDE

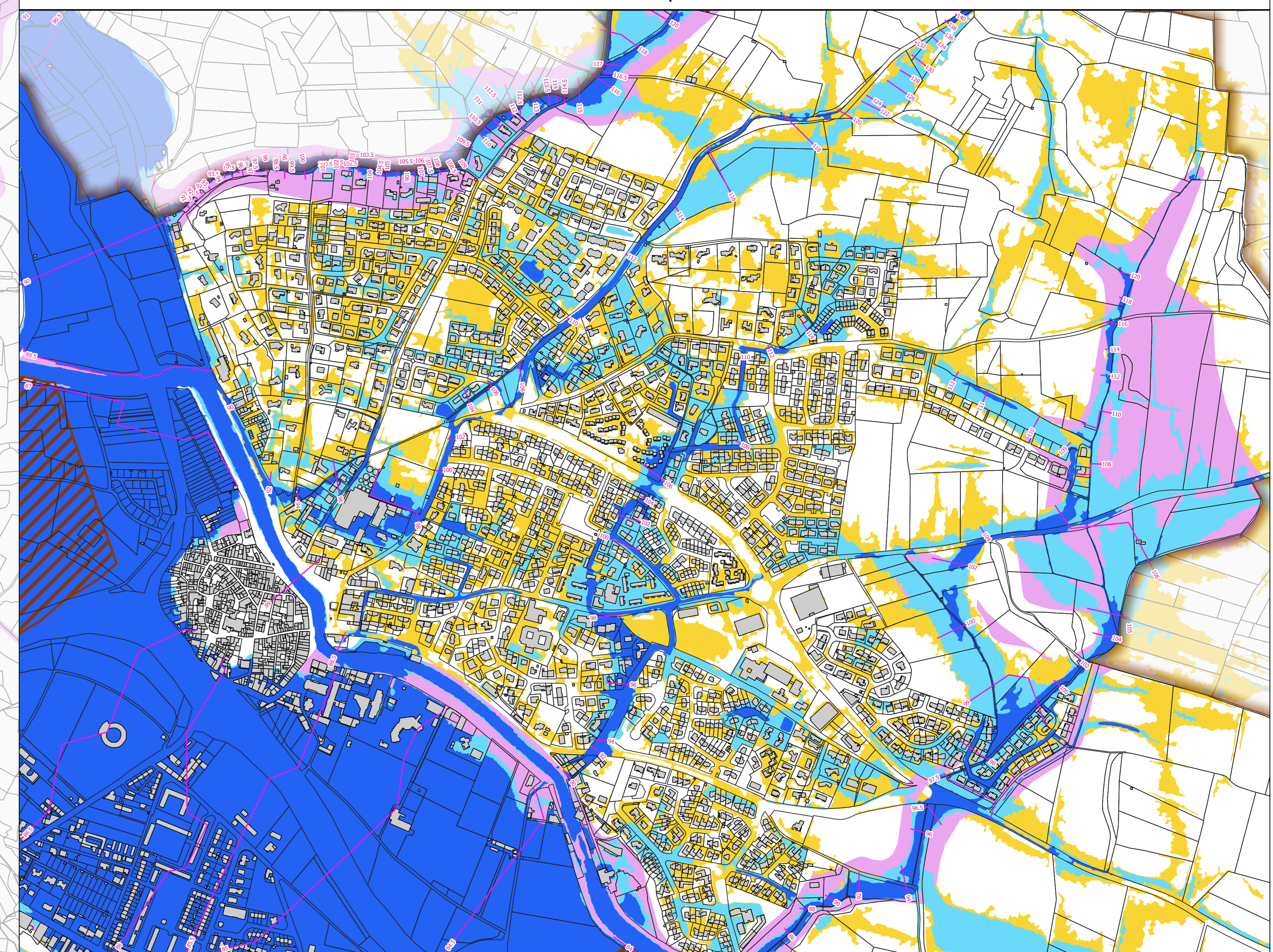
-  Limite communale
-  Batiments
-  Niveau d'eau de la crue de référence (mètre NGF)
- Aléa inondation**
-  Aléa fort
-  Aléa modéré
-  Zone inondable par hydrogéomorphologie
-  Aléa faible ruissellement
-  Aléa très fort - digue



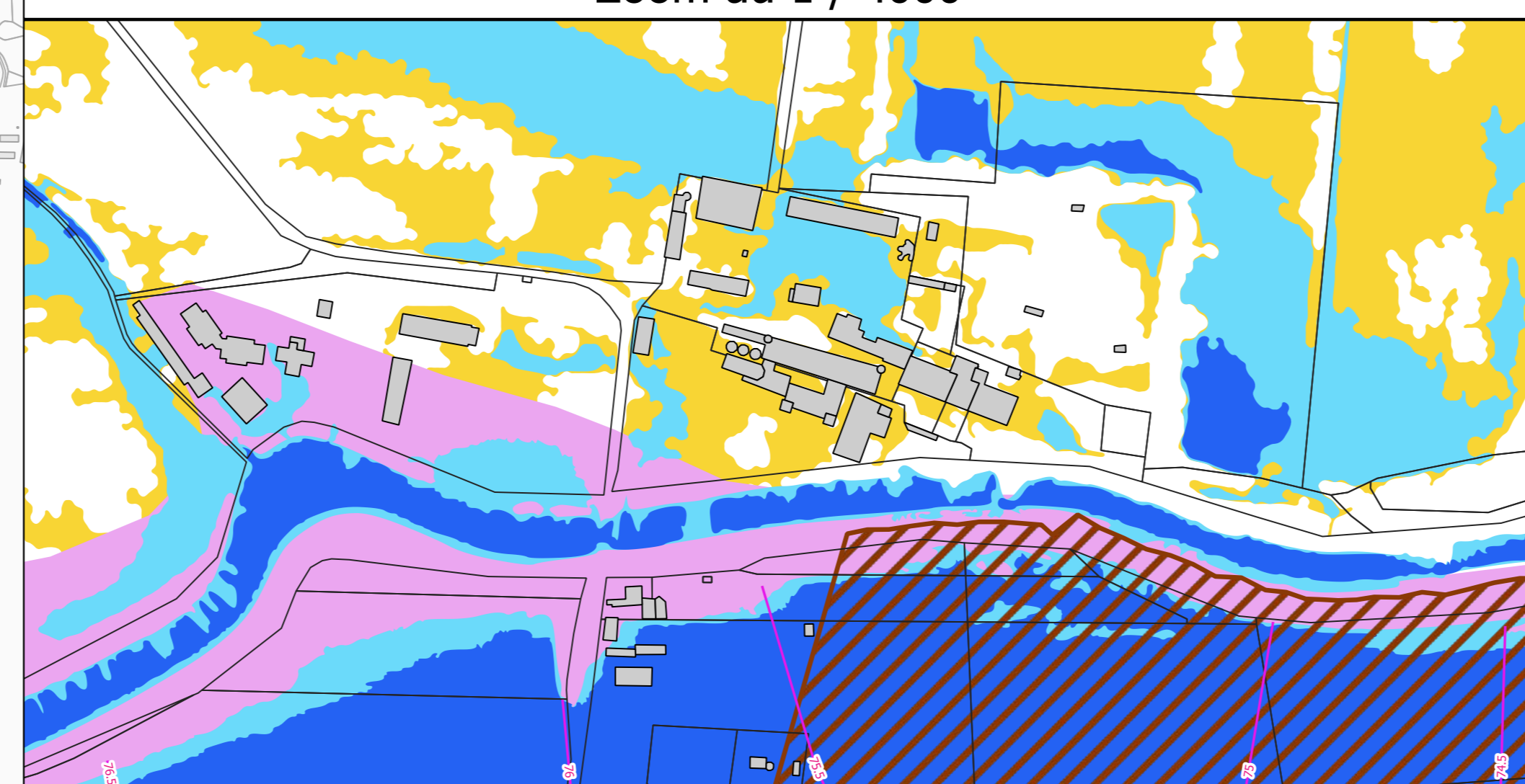
Zoom au 1 / 4000



Zoom au 1 / 5000



Zoom au 1 / 4000



100 0 100 200 m

Source @IGN