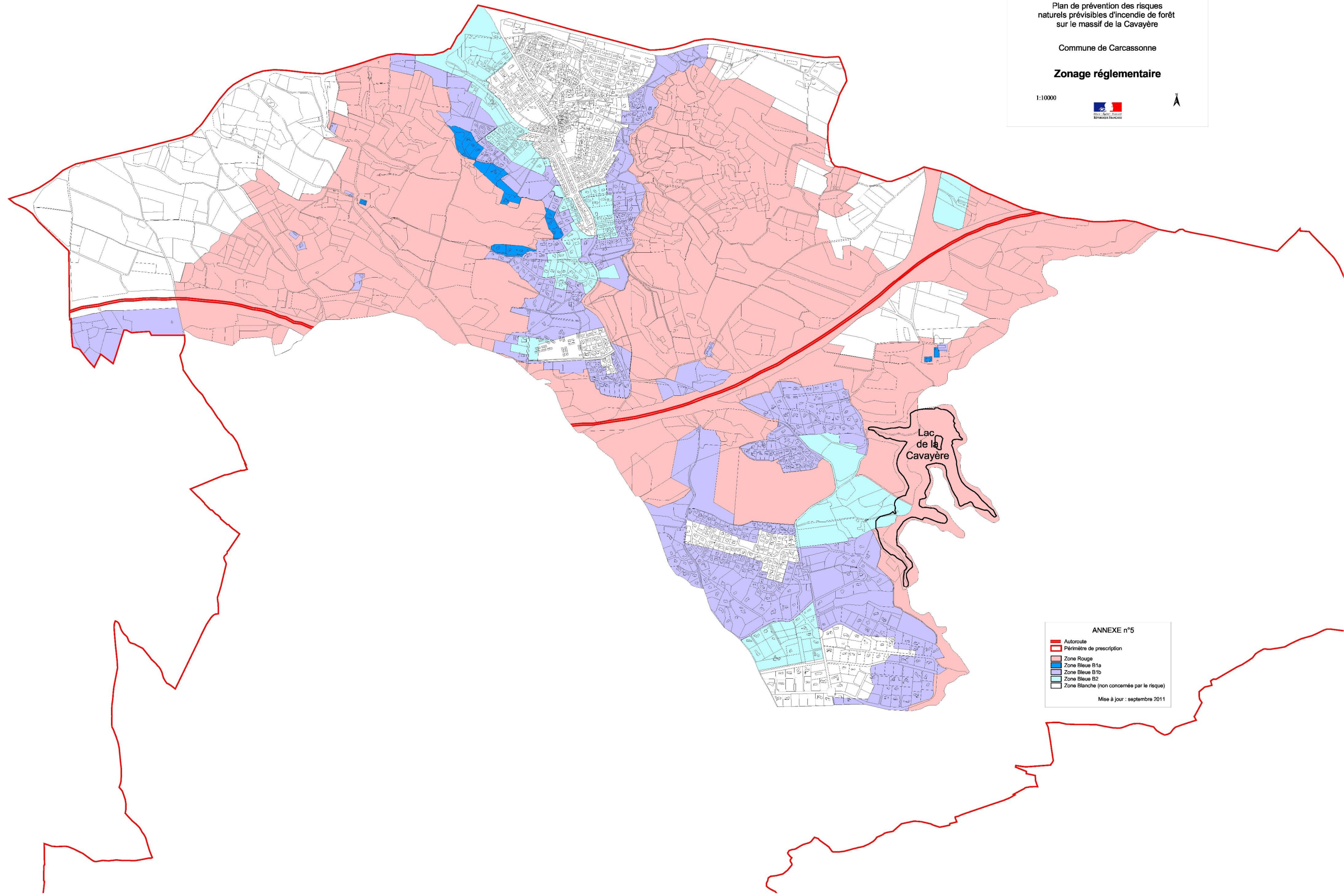


Plan de prévention des risques
naturels prévisibles d'incendie de forêt
sur le massif de la Cavayère








Commune de Carcassonne

Zonage réglementaire

1:10000



ANNEXE n°5

-  Autoroute
-  Périmètre de prescription
-  Zone Rouge
-  Zone Bleue B1a
-  Zone Bleue B1b
-  Zone Bleue B2
-  Zone Blanche (non concernée par le risque)

Mise à jour : septembre 2011