

Porter à connaissance "risques technologiques"

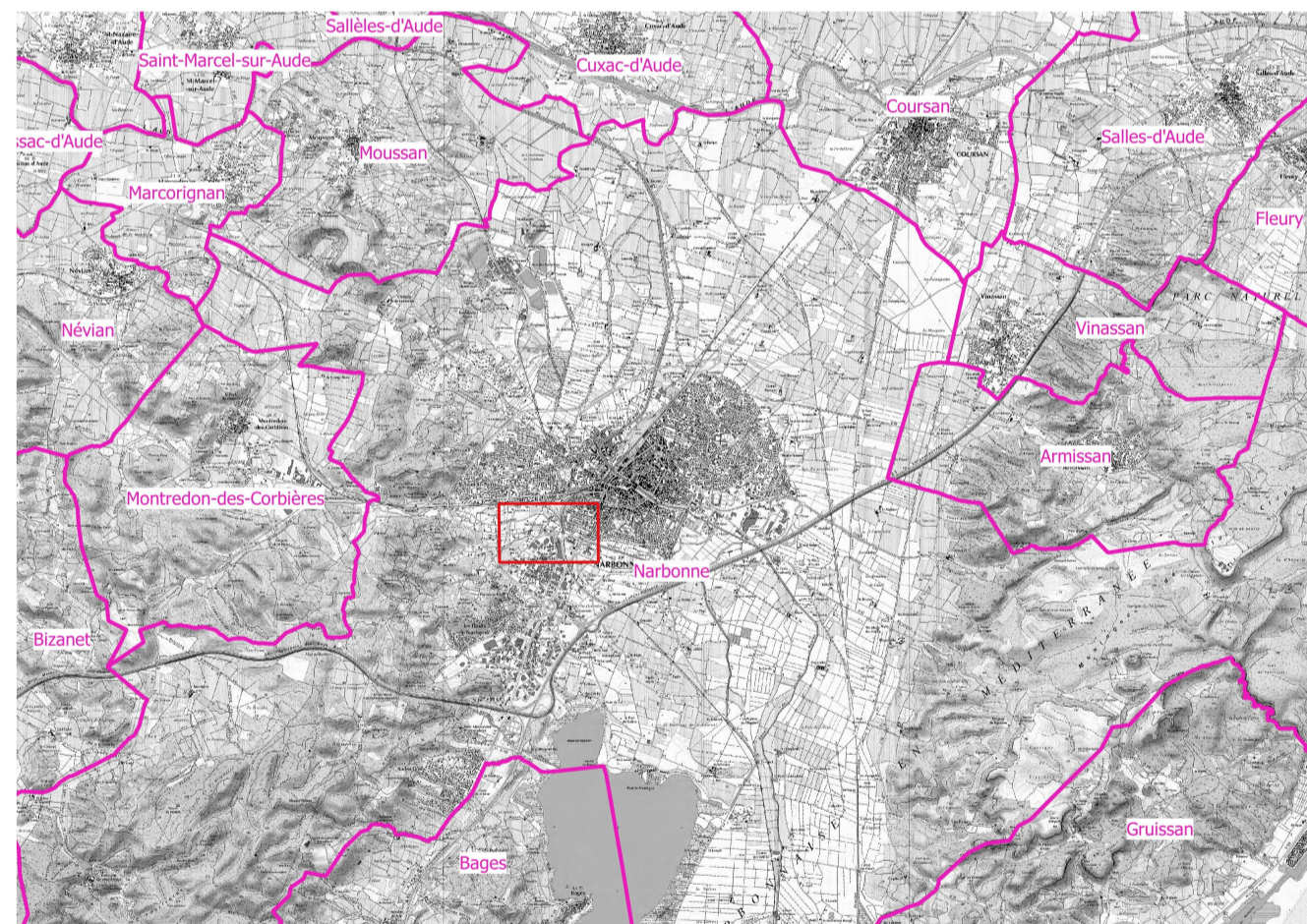
Commune de Narbonne

Annexe 3






Janvier 2021

Echelle: 1/ 2 000

Plan de situation



Légende

-  Foncier de l'entreprise Atelier Occitanie
- Enveloppes des intensités de surpression de classe de probabilité E
-  Bris de vitres (BV)
-  Seuil des effets irréversibles (SEI)
-  Seuil des effets létaux (SEL)
-  Seuil des effets létaux significatifs (SELS)

